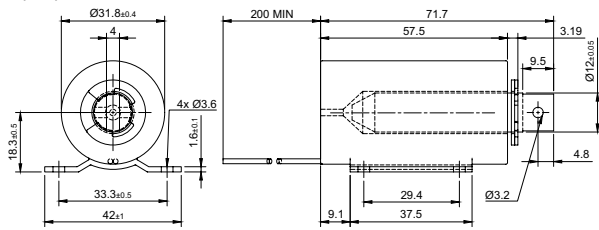


## DRAWING (mm)



## PHOTO



## MODEL NO. DESIGNATION

T3257L - VOLTAGE

Example: T3257L-06V

## ACCESSORIES

● C = customizations are offered on demand even for smaller quantities. Typical customizations are indicated with a green dot at column end. Please contact us for any customization request.

## SOLENOID DATA

SOLENOID DATA					C
Duty cycle	%	100	50	25	10
Power	W	13	26	52	130
Max. time in energized state	s	∞	390	60	18

## PERFORMANCE DATA T3257L-06V

PERFORMANCE DATA T3257L-06V					C
Duty cycle	%	100	25	10	
Individual voltages	V	6	8.5	12	19
Resistance	Ω	2.8			

## PERFORMANCE DATA T3257L-12V

PERFORMANCE DATA T3257L-12V					C
Duty cycle	%	100	50	25	10
Individual voltages	V	12	17	24	38
Resistance	Ω	11			

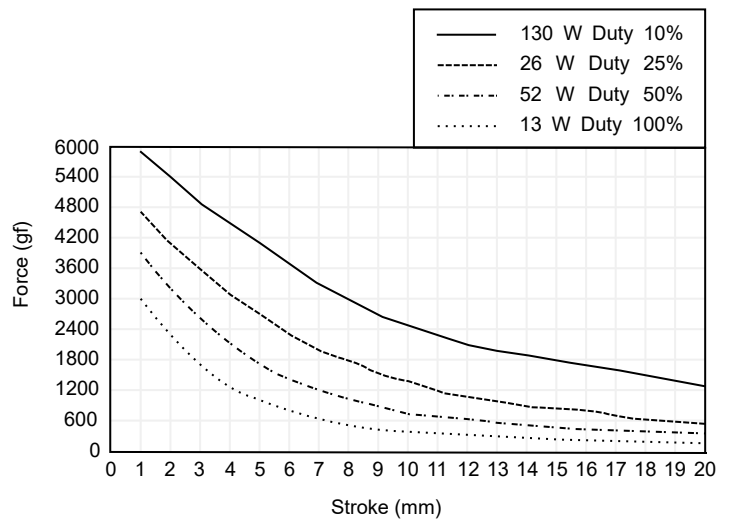
## PERFORMANCE DATA T3257L-24V

PERFORMANCE DATA T3257L-24V					C
Duty cycle	%	100	50	25	10
Individual voltages	V	24	34	48	76
Resistance	Ω	44			

## SOLENOID FEATURES AND STANDARD DATA

SOLENOID FEATURES AND STANDARD DATA			C
Type	Pull type DC solenoid		●
Nominal voltage range <sup>1</sup>	V	6 to 24	●
Loading force <sup>2</sup>	N	2.1	
Cable	Flying wire		●
Cable length	mm	230	
Service life	At least 500000 single strokes		
Return spring	Yes		
Plunger material	Carbon steel 12L14		
IP rating	IP50		
Insulation class	B		
Weight	g	300	
Operating temperature	°C	-5 to 40	
Manufacturing standard	ISO9001   TS 16949		
CE label   UL label	No   No		

## PERFORMANCE GRAPH



## NOTES

- Nominal voltages, 100 % duty cycle.
- At 3 mm compression.

## PLUNGER PROFILE

