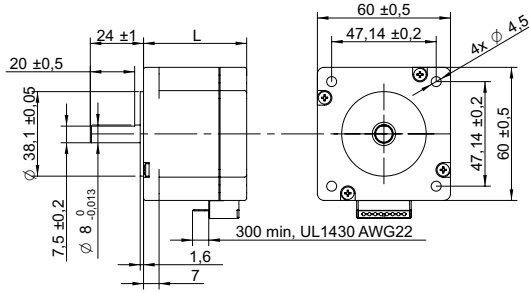
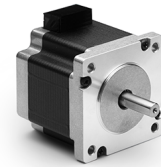


DRAWING (mm)



PHOTO



MODEL NO. DESIGNATION



Example: SHW6047-18-280

OPTIONS DRIVER AND POWER SUPPLY



● C = customizations are offered on demand even for smaller quantities. Typical customizations are indicated with a green dot at column end. Please contact us for any customization request.

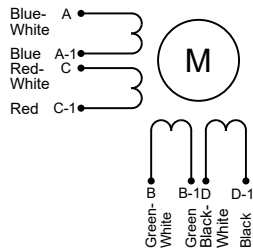
COMMON MOTOR DATA

		C	
Step angle	°	1.8	
Step angle accuracy ¹	%	± 5	
Shaft material		X8CrNiS18-9 SUS303 ●	
Bearing type		Ball bearing ●	
Radial play ²	mm	0.02	
Axial play ²	mm	0.08	
Max. radial force ³	N	75	
Max. axial force	N	15	
Dielectric strength ⁴	V	600	
Insulation resistance ⁵	MΩ	100	
Operating temperature	°C	-20 to 50 ●	
Insulation class		Class B	
IP rating		IP30 ●	
Connection harness		UL 1430 AWG22 300 mm ●	
Connector		Not in standard ●	

MODEL-SPECIFIC MOTOR DATA

Model	SHW6047-18-280	SHW6056-18-280	SHW6067-18-280	SHW6088-18-280	
Graph	A	B	C	D	
Holding torque	Nm	1.1	1.7	2.1	3
Detent torque	Nm	0.05	0.07	0.09	0.12
Rotor inertia	gcm ²	280	400	570	840
Current phase	A	2.8	2.8	2.8	2.8
Resistance phase	Ω	0.75	0.9	1.2	1.5
Inductance	mH	2	3.6	4.6	6.8
Length	mm	47	56	67	88
Weight	kg	0.6	0.77	1.2	1.4

EXCITATION SEQUENCE TABLE



CW	A	C	B	D
1	●		●	
2		●	●	
3		●		●
4	●			●
1	●		●	

● = +Polarity

SPEED | TORQUE PERFORMANCE GRAPH PULL OUT

Graph	A	B	C	D	
Supply voltage	V	48	48	48	48
Current phase	A	2.7	2.7	2.7	2.7

NOTES

- Full step no load.
- 450 g load.
- 20 mm from shaft.
- AC, 1 second.
- 500 V, DC.

