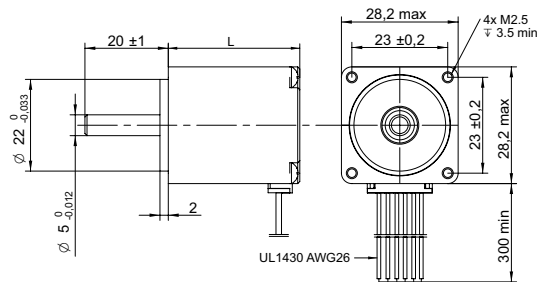


## DRAWING (mm)



## PHOTO



## MODEL NO. DESIGNATION

SHW28 - STEP ANGLE - CURRENT

Example: SHW2832-18-067

## OPTIONS DRIVER AND POWER SUPPLY



● C = customizations are offered on demand even for smaller quantities. Typical customizations are indicated with a green dot at column end. Please contact us for any customization request.

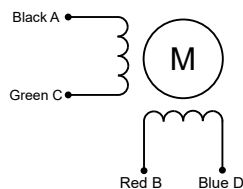
## COMMON MOTOR DATA

		C	
Step angle	°	1.8	
Step angle accuracy <sup>1</sup>	%	± 5	
Shaft material		X8CrNiS18-9   SUS303 ●	
Bearing type		Ball bearing ●	
Radial play <sup>2</sup>	mm	0.02	
Axial play <sup>2</sup>	mm	0.08	
Max. radial force <sup>3</sup>	N	28	
Max. axial force	N	7	
Dielectric strength <sup>4</sup>	V	600	
Insulation resistance <sup>5</sup>	MΩ	100	
Operating temperature	°C	-20 to 50 ●	
Insulation class		Class B	
IP rating		IP30 ●	
Connection harness		UL 1061 AWG26   300 mm ●	
Connector		Not in standard ●	

## MODEL-SPECIFIC MOTOR DATA

Model	SHW2832-18-067	SHW2845-18-067	SHW2851-18-067	
Graph	A	B	C	
Holding torque	mNm	60	95	120
Detent torque	mNm	5	6	8
Rotor inertia	gcm <sup>2</sup>	4	12	18
Current   phase	A	0.67	0.67	0.67
Resistance   phase	Ω	5.6	6.8	9.2
Inductance	mH	3.4	4.9	7.2
Length	mm	32	45	51
Weight	kg	0.11	0.14	0.2

## EXCITATION SEQUENCE TABLE



CW	A	C	B	D
1	●		●	
2		●	●	
3		●		●
4	●			●
1	●		●	

● = +Polarity

## SPEED | TORQUE PERFORMANCE GRAPH PULL OUT

Graph	A	B	C	
Supply voltage	V	24	24	24
Current   phase	A	0.67	0.67	0.67

## NOTES

1. Full step no load.
2. 450 g load.
3. 20 mm from shaft.
4. AC, 1 second.
5. 500 V, DC.

