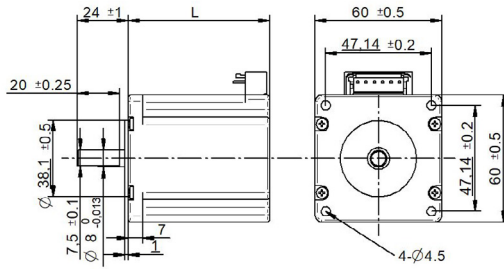
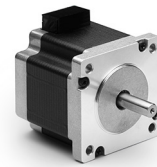


SHC60-18 Series connector □ 60 mm

DRAWING (mm)



PHOTO



MODEL NAME DESIGNATION

SHW3520 - STEP ANGLE - CURRENT

Example: SHW35-09-100



OPTIONS MOTOR DRIVERS AND POWER SUPPLIES



MOTOR FEATURES

Step angle	1.8
Step angle accuracy	± 5% full step no load
Shaft material	X8CrNiS18-9 303
Bearing type	Ball bearing
Radial play	0.02 mm 450 g
Axial play	0.08 mm 450 g
Max. radial force	75N 20 mm from shaft
Max. axial force	15N
Dielectric strength	600VAC 1 sec.
Insulation resistance	100MΩ 500VDC
Ambient temperature	-20° - (+50°)
Insulation class	Class B
IP rating	IP30
Connection harness	UL1430 AWG22 300 mm
Connector	JST B6P-VH

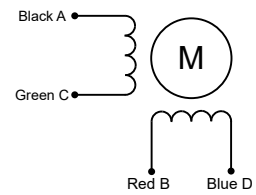
CUSTOMIZATION EXAMPLES

- Shaft configurations
- Bearing type and preload
- Temperature range
- IP rating
- Winding and performance optimization
- Cabling and harness
- Gear box to motor combinations
- Encoder to motor combinations

OPTIONS

- Stepper motor drivers Transmotec DS series
- Power supplies Transmotec LRS series

EXCITATION SEQUENCE TABLE



PIN	2	3	4	5
CW	A	C	B	D
1	●		●	
2		●	●	
3		●		●
4	●			●
1	●		●	

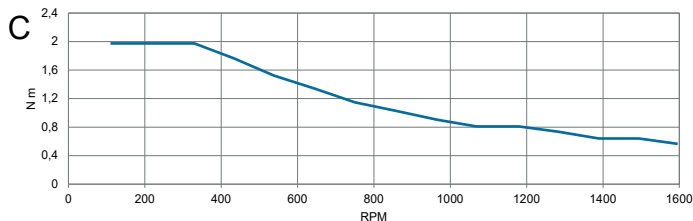
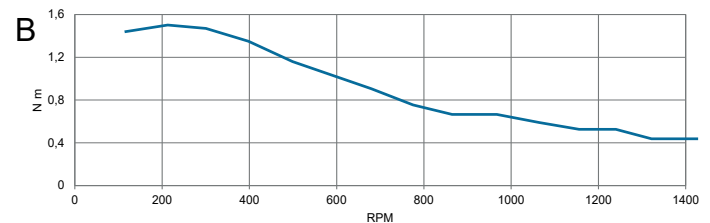
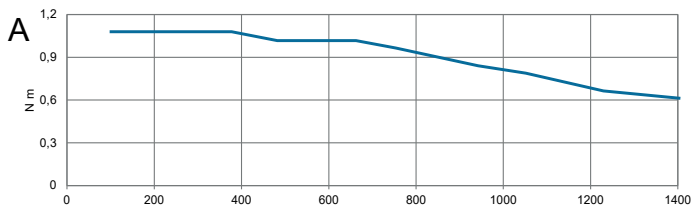
● = + Polarity

MOTOR DATA

Graph	A	B	C	D
Motor model	SHC6047-18-280	SHC6056-18-280	SHC6067-18-280	SHC6088-18-280
Holding torque Nm	1.10	1.65	2.10	3.00
Detent torque Nm	0.05	0.07	0.09	0.12
Rotor inertia gcm ²	275	400	570	840
Current phase A	2.80	2.80	2.80	2.80
Resistance phase Ω	0.75	0.90	1.20	1.50
Inductance mH	2	3.6	4.6	6.8
Length mm	47.0	56.0	67.0	88.0
Weight Kg	0.600	0.770	1.200	1.400

SPEED | TORQUE PERFORMANCE GRAPH PULL OUT

Graph	A	B	C	D
Supply voltage VDC	48	48	48	48
Current phase A	2.7	2.7	2.7	2.7



D