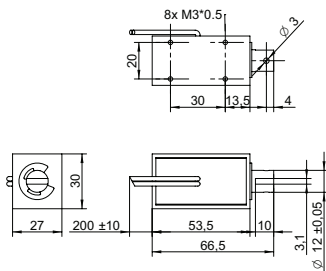


## DRAWING (mm)



## PHOTO



## MODEL NO. DESIGNATION

F1253L - VOLTAGE

Example: F1253L-06V

## ACCESSORIES

● C = customizations are offered on demand even for smaller quantities. Typical customizations are indicated with a green dot at column end. Please contact us for any customization request.

## SOLENOID DATA

	%	100	50	25	10
Duty cycle	%	100	50	25	10
Power	W	6	12	24	60
Max. time in energized state	s	∞	140	50	9

## PERFORMANCE DATA F1253L-06V

	%	100	50	25	10
Duty cycle	%	100	50	25	10
Individual voltages	V	6	8.5	12	19
Resistance	Ω	6			

## PERFORMANCE DATA F1253L-12V

	%	100	50	25	10
Duty cycle	%	100	50	25	10
Individual voltages	V	12	17	24	38
Resistance	Ω	24			

## PERFORMANCE DATA F1253L-24V

	%	100	50	25	10
Duty cycle	%	100	50	25	10
Individual voltages	V	24	34	48	76
Resistance	Ω	96			

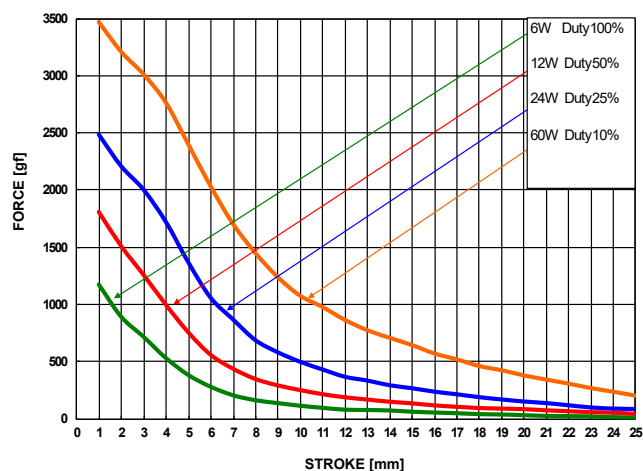
## PERFORMANCE DATA F1253L-48V

	%	100	50	25	10
Duty cycle	%	100	50	25	10
Individual voltages	V	48	68	96	152
Resistance	Ω	384			

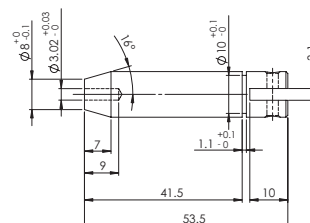
## SOLENOID FEATURES AND STANDARD DATA

Type	Pull type DC solenoid ●	
Nominal voltage range <sup>1</sup>	V	6 to 48 ●
Loading force <sup>2</sup>	N	0.83
Cable	Flying wires ●	
Cable length	mm	230
Service life	At least 500000 single strokes	
Return spring	Yes	
Plunger material	Carbon steel 12L14	
IP rating	IP00	
Insulation class	B	
Weight	g	210
Operating temperature	°C	-5 to 40
Manufacturing standard	ISO9001:2008   ISO/TS 16949:2002	
CE label   UL label	No   No	

## PERFORMANCE GRAPH



## PLUNGER PROFILE



## NOTES

- Nominal voltages, 100 % duty cycle.
- At 20 mm compression.