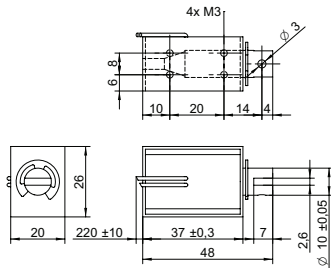


## DRAWING (mm)



## PHOTO



## MODEL NO. DESIGNATION

F1037L - VOLTAGE

Example: F1037L-06V

## ACCESSORIES

● C = customizations are offered on demand even for smaller quantities. Typical customizations are indicated with a green dot at column end. Please contact us for any customization request.

## SOLENOID DATA

Parameter	Unit	100%	50%	25%	10%
Duty cycle	%	100	50	25	10
Power	W	4	8	16	40
Max. time in energized state	s	∞	100	36	7

## PERFORMANCE DATA F1037L-06V

Parameter	Unit	100%	50%	25%	10%
Duty cycle	%	100	50	25	10
Individual voltages	V	6	8.5	12	19
Resistance	Ω	9			

## PERFORMANCE DATA F1037L-12V

Parameter	Unit	100%	50%	25%	10%
Duty cycle	%	100	50	25	10
Individual voltages	V	12	17	24	38
Resistance	Ω	36			

## PERFORMANCE DATA F1037L-24V

Parameter	Unit	100%	50%	25%	10%
Duty cycle	%	100	50	25	10
Individual voltages	V	24	34	48	76
Resistance	Ω	144			

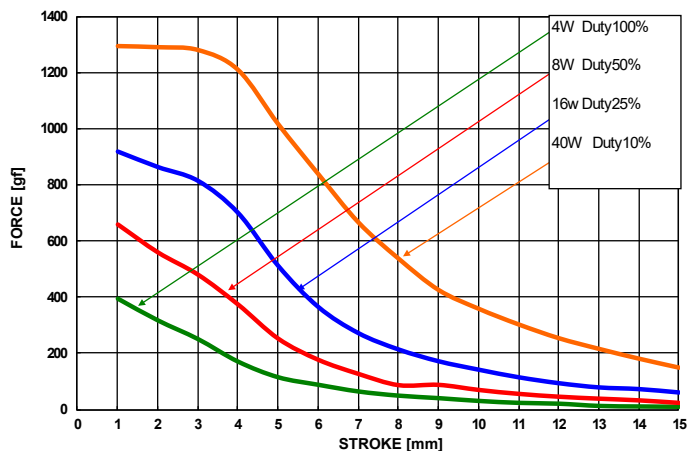
## PERFORMANCE DATA F1037L-48V

Parameter	Unit	100%	50%	25%	10%
Duty cycle	%	100	50	25	10
Individual voltages	V	48	68	96	152
Resistance	Ω	576			

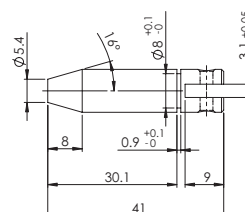
## SOLENOID FEATURES AND STANDARD DATA

Type	Pull type DC solenoid ●	
Nominal voltage range <sup>1</sup>	V	6 to 48 ●
Loading force <sup>2</sup>	N	0.59
Cable	Flying wires ●	
Cable length	mm	230
Service life	At least 500000 single strokes	
Return spring	Yes	
Plunger material	Carbon steel 12L14	
IP rating	IP00	
Insulation class	B	
Weight	g	96
Operating temperature	°C	-5 to 40
Manufacturing standard	ISO9001:2008   ISO/TS 16949:2002	
CE label   UL label	No   No	

## PERFORMANCE GRAPH



## PLUNGER PROFILE



## NOTES

1. Nominal voltages, 100 % duty cycle.
2. At 5 mm compression.