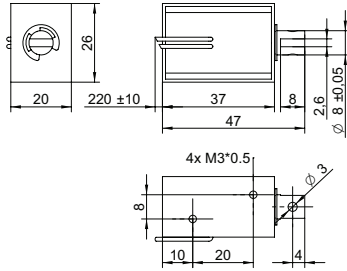


DRAWING (mm)



PHOTO



MODEL NO. DESIGNATION

F0837L - VOLTAGE

Example: F0837L-06V

ACCESSORIES

● C = customizations are offered on demand even for smaller quantities. Typical customizations are indicated with a green dot at column end. Please contact us for any customization request.

SOLENOID DATA

| | % | 100 | 50 | 25 | 10 |
|------------------------------|---|-----|-----|----|----|
| Duty cycle | | | | | |
| Power | W | 4 | 8 | 16 | 40 |
| Max. time in energized state | s | ∞ | 100 | 36 | 7 |

PERFORMANCE DATA F0837L-06V

| | % | 100 | 50 | 25 | 10 |
|---------------------|---|-----|-----|----|----|
| Duty cycle | | | | | |
| Individual voltages | V | 6 | 8.5 | 12 | 19 |
| Resistance | Ω | 9 | | | |

PERFORMANCE DATA F0837L-12V

| | % | 100 | 50 | 25 | 10 |
|---------------------|---|-----|----|----|----|
| Duty cycle | | | | | |
| Individual voltages | V | 12 | 17 | 24 | 38 |
| Resistance | Ω | 36 | | | |

PERFORMANCE DATA F0837L-24V

| | % | 100 | 50 | 25 | 10 |
|---------------------|---|-----|----|----|----|
| Duty cycle | | | | | |
| Individual voltages | V | 24 | 34 | 48 | 76 |
| Resistance | Ω | 144 | | | |

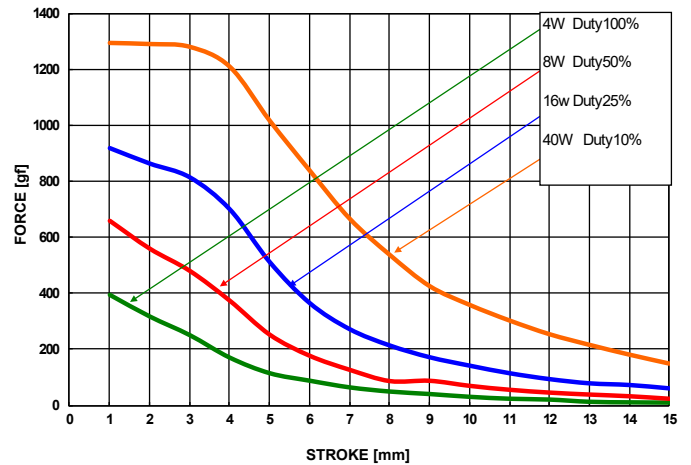
PERFORMANCE DATA F0837L-48V

| | % | 100 | 50 | 25 | 10 |
|---------------------|---|-----|----|----|-----|
| Duty cycle | | | | | |
| Individual voltages | V | 48 | 68 | 96 | 152 |
| Resistance | Ω | 576 | | | |

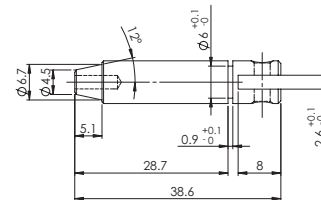
SOLENOID FEATURES AND STANDARD DATA

| | | | |
|------------------------------------|----------------------------------|----------|---|
| Type | Pull type DC solenoid | | ● |
| Nominal voltage range ¹ | V | 6 to 48 | ● |
| Loading force ² | N | 0.47 | |
| Cable | Flying wires | | ● |
| Cable length | mm | 230 | |
| Service life | At least 500000 single strokes | | |
| Return spring | Yes | | |
| Plunger material | Carbon steel 12L14 | | |
| IP rating | IP00 | | |
| Insulation class | B | | |
| Weight | g | 96 | |
| Operating temperature | °C | -5 to 40 | |
| Manufacturing standard | ISO9001:2008 ISO/TS 16949:2002 | | |
| CE label UL label | No No | | |

PERFORMANCE GRAPH



PLUNGER PROFILE



NOTES

- Nominal voltages, 100 % duty cycle.
- At 5 mm compression.