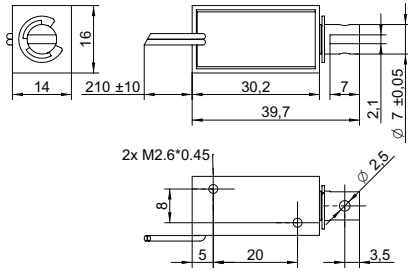


### DRAWING (mm)



### PHOTO



### MODEL NO. DESIGNATION

F0730L - VOLTAGE

Example: F0730L-06V

### ACCESSORIES

● C = customizations are offered on demand even for smaller quantities. Typical customizations are indicated with a green dot at column end. Please contact us for any customization request.

### SOLENOID DATA

	%	100	50	25	10
Duty cycle	%	100	50	25	10
Power	W	2.2	4.4	8.8	22
Max. time in energized state	s	∞	55	19	3

### PERFORMANCE DATA F0730L-06V

	%	100	50	25	10
Duty cycle	%	100	50	25	10
Individual voltages	V	6	8.5	12	19
Resistance	Ω	16			

### PERFORMANCE DATA F0730L-12V

	%	100	50	25	10
Duty cycle	%	100	50	25	10
Individual voltages	V	12	17	24	38
Resistance	Ω	66			

### PERFORMANCE DATA F0730L-24V

	%	100	50	25	10
Duty cycle	%	100	50	25	10
Individual voltages	V	24	34	48	76
Resistance	Ω	262			

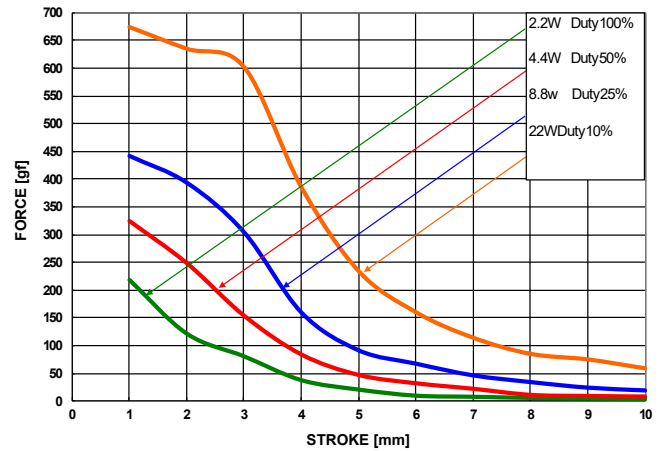
### PERFORMANCE DATA F0730L-48V

	%	100	50	25	10
Duty cycle	%	100	50	25	10
Individual voltages	V	48	68	96	152
Resistance	Ω	1047			

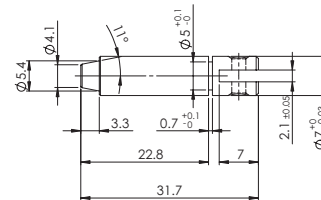
### SOLENOID FEATURES AND STANDARD DATA

Type	Pull type DC solenoid		●
Nominal voltage range <sup>1</sup>	V	6 to 48	●
Loading force <sup>2</sup>	N	0.91	
Cable	Flying wires		●
Cable length	mm	230	
Service life	At least 500000 single strokes		
Return spring	Yes		
Plunger material	Carbon steel 12L14		
IP rating	IP00		
Insulation class	B		
Weight	g	33	
Operating temperature	°C	-5 to 40	
Manufacturing standard	ISO9001:2008   ISO/TS 16949:2002		
CE label   UL label	No   No		

### PERFORMANCE GRAPH



### PLUNGER PROFILE



### NOTES

- Nominal voltages, 100 % duty cycle.
- At 1 mm compression.