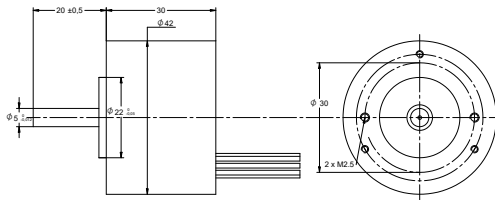


## DRAWING (mm)



## PHOTO



## MODEL NO. DESIGNATION

BR4230 - VOLTAGE

Example: BR4230-12

## ACCESSORIES



● C = customizations are offered on demand even for smaller quantities. Typical customizations are indicated with a green dot at column end. Please contact us for any customization request.

BRUSHLESS DC MOTOR DATA		BR4230-12	BR4230-24	C
Nominal voltage	V	12	24	
Commutator hall voltage	V	5 ~ 24	5 ~ 24	
No load speed	rpm	5500	5500	
No load current	A	0.4	0.4	
Nominal speed	rpm	4000	4000	
Nominal torque	mNm	20	20	
Nominal current	A	0.83	0.42	
Start/Stall torque	mNm	60	60	
Efficiency	%	84	83	
Nominal power	W	8.4	8.4	
Terminal resistance	Ω	1.5	5.9	
Terminal inductance	mH	1.3	5.1	
Torque constant	mNm/A	24	48	
Rotor inertia	gcm <sup>2</sup>	16	16	
Bearing type		Ball bearing		
Axial play at axial load < 3.5 N	mm	0.08		
Axial play at axial load > 3.5 N	mm	0.08		
Radial play	mm	0.02		
Max. dynamic axial load	N	2		
Max. radial load <sup>1</sup>	N	10		

## NOTES

1. 10 mm from flange.

OTHER BRUSHLESS DC MOTOR DATA		BR4230-12	BR4230-24	C
Number of pole pairs		4		
Number of phases		3		
Weight	g	120		
Operating temperature	°C	-20 to 50		
Max. winding temperature	°C	130		
Motor insulation class		B		
IP rating		IP40		
Hall sensors and power harness length	mm	300		●
Power harness		UL1007 AWG22		
Hall sensors harness		UL1007 AWG26		●
Shaft length from flange	mm	20		●
Shaft diameter Ø	mm	5		
Service life	h	10000		
Manufacturing standard		ISO9001   ISO14001   TS16949		

## CABLE AND PIN CONFIGURATION

Power		Hall		C
Phase	Cable color	Phase	Cable color	
U	RED	HU	YEL	
V	BRN	HV	BRN	
W	BLK	HW	RED	
		+5V	BLU	
		GND	GRN	