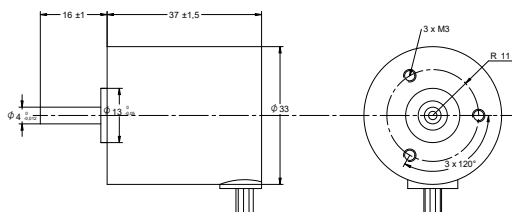


DRAWING (mm)



PHOTO



MODEL NO. DESIGNATION

BR3337 - VOLTAGE

Example: BR3337-12

ACCESSORIES



● C = customizations are offered on demand even for smaller quantities. Typical customizations are indicated with a green dot at column end. Please contact us for any customization request.

BRUSHLESS DC MOTOR DATA		BR3337-12	BR3337-24	C
Nominal voltage	V	12	24	
Commutator hall voltage	V	5 ~ 24	5 ~ 24	
No load speed	rpm	4700	4500	
No load current	A	0.5	0.3	
Nominal speed	rpm	3000	3000	
Nominal torque	mNm	22	22	
Nominal current	A	0.96	0.48	
Start/Stall torque	mNm	50	66	
Efficiency	%	60	60	
Nominal power	W	6.9	6.9	
Terminal resistance	Ω	3.1	13	
Terminal inductance	mH	1.7	7	
Torque constant	mNm/A	23	46	
Rotor inertia	gcm ²	8	8	
Bearing type		Ball bearing		
Axial play at axial load < 3.5 N	mm	0.14		
Axial play at axial load > 3.5 N	mm	0.14		
Radial play	mm	0.02		
Max. dynamic axial load	N	2		
Max. radial load ¹	N	10		

NOTES

1. 10 mm from flange.

OTHER BRUSHLESS DC MOTOR DATA		BR3337-12	BR3337-24	C
Number of pole pairs		2		
Number of phases		3		
Weight	g	120		
Operating temperature	°C	-20 to 50		
Max. winding temperature	°C	130		
Motor insulation class		B		
IP rating		IP40		
Hall sensors and power harness length	mm	200		●
Power harness		UL1007 AWG26		●
Hall sensors harness		UL1007 AWG26		●
Shaft length from flange	mm	16		●
Shaft diameter Ø	mm	4		
Service life	h	10000		
Manufacturing standard		ISO9001 ISO14001 TS16949		

CABLE AND PIN CONFIGURATION				C
Power		Hall		
Phase	Cable color	Phase	Cable color	
U	GRN	HU	BLU	
V	RED	HV	ORG	
W	BLK	HW	BRN	
		+5V	YEL	
		GND	WHT	