



SPUR GEARBOXES | □60 - 90 mm 3:1 - 200:1

S SERIES

We offer a broad range of high quality spur gearboxes in standard and customized configurations. Our customer-centric approach makes us the ideal supplier for your project, especially to instrument and apparatus builders. In addition, we offer immediate delivery, thanks to always having a high number of motors in stock.

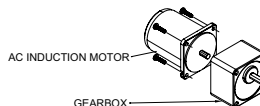
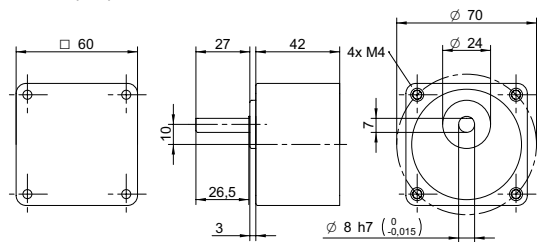
Customizations include:

- ✓ Customized harness
- ✓ Winding configuration
- ✓ Shaft configuration
- ✓ And more...

TABLE OF CONTENTS

MODEL	FRAME SIZE mm	NOMINAL TORQUE Nm	GEARBOX EFFICIENCY %	RADIAL LOAD N	PAGE
S60A	60	6	59 to 81	80 to 180	1
S70A	70	15	59 to 81	120 to 250	2
S80A	80	25	59 to 81	150 to 300	3
S90A	90	40	59 to 81	350 to 450	4
S90B	90	60	59 to 81	500 to 700	5

DRAWING (mm)



PHOTO



MODEL NO. DESIGNATION

S60A - GEAR RATIO

Example: S60A-003

ACCESSORIES¹



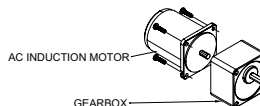
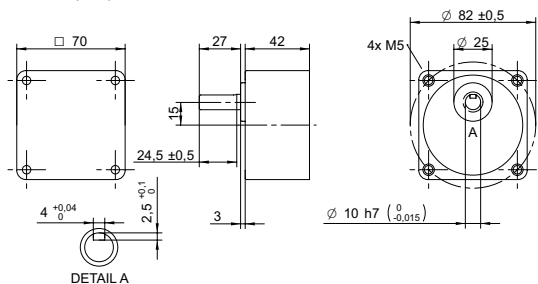
● C = customizations are offered on demand even for smaller quantities. Typical customizations are indicated with a green dot at column end. Please contact us for any customization request.

GEARBOX DATA																						C			
Gear ratio		3	3.6	5	6	7.5	9	10	12.5	15	18	20	25	30	36	40	50	60	75	90	100	120	150	180	200
Gearb. nom. torq. ²	Nm	3	3	3	3	3	3	3	3	3	3	3	3	3	3	3	3	3	3	3	3	3	3	3	3
Gearbox efficiency	%	81	81	81	81	81	81	81	81	81	73	73	73	73	73	73	66	66	66	66	66	66	66	66	
Radial load ³	N	80	80	80	80	80	80	80	80	80	180	180	180	180	180	180	180	180	180	180	180	180	180	180	
Direction of rot.		CW	CW	CW	CW	CW	CW	CW	CW	CW	CCW	CCW	CCW	CCW	CCW	CCW	CW	CW	CW	CW	CW	CW	CW	CW	
Weight	kg	0.4	0.4	0.4	0.4	0.4	0.4	0.4	0.4	0.4	0.4	0.4	0.4	0.4	0.4	0.4	0.4	0.4	0.4	0.4	0.4	0.4	0.4	0.4	

OTHER GEARBOX DATA		SPUR GEARBOX RANGE S SERIES ⁴		NOTES
Shaft axial load	N	30		1. See page 6 of this catalog.
Bearing type		Ball bearing		2. Gearbox nominal torque.
Shaft material		40 Cr steel		3. 20 mm from shaft.
Housing material		Aluminum		4. Visit www.transmotec.com to view datasheets.
Material gear stage		40 Cr steel		
Service life	h	10000		
Performance tolerances		± 15		
Operating temperature	°C	-10 to 40		
IP rating		IP20		
Manufacturing standard		ISO 9001		
CE label UL label		No No		

COMPATIBLE MOTORS ⁴		C							
Model		AI-006W-230-SC	AI-006W-400-TC	AI-006W-120-SC/B	AI-006W-220-TC	AIR-006W-230-SC	AIR-006W-120-SC	AIS-006W-230-SC	AIS-006W-120-SC
No. of phases		1	3	1	3	1	3	1	3
Frequency	Hz	50	50	60	60	50	60	50	60
Nominal speed	rpm	1500	1200	1500	1500	1200	1500	90 to 1200	90 to 1200
Nominal torque	mNm	40	48	40	40	48	40	55	50
Nominal current	A	0.14	0.04	0.18	0.07	0.15	0.2	0.11	0.18
Nominal power	W	6	6	6	6	6	6	6	6
Nom. speed at 50:1	rpm	29	24	29	29	24	29	24	24
Nom. torque at 50:1	Nm	1.5	1.8	1.5	1.5	1.8	1.5	2.0	1.8

DRAWING (mm)



PHOTO



MODEL NO. DESIGNATION

S70A - GEAR RATIO

Example: S70A-003

ACCESSORIES¹



● C = customizations are offered on demand even for smaller quantities. Typical customizations are indicated with a green dot at column end. Please contact us for any customization request.

GEARBOX DATA		C																												
Gear ratio		3	3.6	5	6	7.5	9	10	12.5	15	18	20	25	30	36	40	50	60	75	90	100	120	150	180	200	250	300	500	600	750
Gearb. nom. torq. ⁴	Nm	5	5	5	5	5	5	5	5	5	5	5	5	5	5	5	5	5	5	5	5	5	5	5	5	5	5	5	5	5
Gearbox efficiency	%	81	81	81	81	81	81	81	81	81	73	73	73	73	73	73	66	66	66	66	66	66	66	66	59	59	59	59	59	
Radial load ⁵	N	120	120	120	120	120	120	120	120	120	250	250	250	250	250	250	250	250	250	250	250	250	250	250	250	250	250	250	250	
Direction of rot.		CW	CW	CW	CW	CW	CW	CW	CW	CW	CCW	CCW	CCW	CCW	CCW	CCW	CW	CW	CW	CW	CW	CW	CW	CW	CW	CCW	CCW	CCW	CCW	
Weight	kg	0.5	0.5	0.5	0.5	0.5	0.5	0.5	0.5	0.5	0.5	0.5	0.5	0.5	0.5	0.5	0.5	0.5	0.5	0.5	0.5	0.5	0.5	0.5	0.5	0.5	0.5	0.5	0.5	

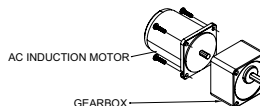
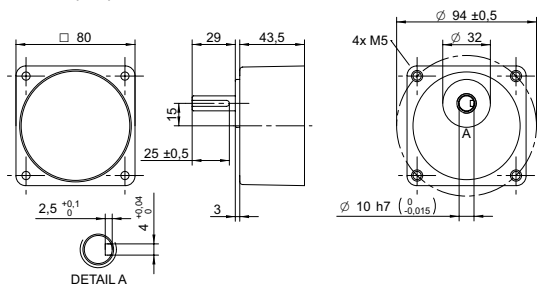
OTHER GEARBOX DATA		C	
Shaft axial load	N	40	
Bearing type		Ball bearing	
Shaft material		40 Cr steel	
Housing material		Aluminum	
Material gear stage		40 Cr steel	
Service life	h	10000	
Performance tolerances		± 15	
Operating temperature	°C	-10 to 40	
IP rating		IP20	
Manufacturing standard		ISO 9001	
CE label UL label		No No	

SPUR GEARBOX RANGE S SERIES ⁴		
Dimension	mm	See separate datasheet.
Gear ratio	W	See separate datasheet.
Compatible models	mm	See separate datasheet.

- NOTES**
1. See page 6 of this catalog.
 2. Gearbox nominal torque.
 3. 20 mm from shaft.
 4. Visit www.transmotec.com to view datasheets.

COMPATIBLE MOTORS ⁴		C							
Model		AI-015W-230-SC	AI-015W-400-TC	AI-015W-120-SC/B	AI-015W-208-TC	AIR-015W-230-SC	AIR-015W-120-SC	AIS-015W-230-SC	AIS-015W-120-SC
No. of phases		1	3	1	3	1	3	1	3
Frequency	Hz	50	50	60	60	50	60	50	60
Nominal speed	rpm	1200	1200	1500	1500	1200	1500	90 to 1200	90 to 1200
Nominal torque	mNm	130	130	110	110	130	110	120	130
Nominal current	A	0.2	0.08	0.32	0.12	0.23	0.42	0.2	0.32
Nominal power	W	15	15	15	15	15	15	15	15
Nom. speed at 50:1	rpm	24	24	29	29	24	29	24	24
Nom. torque at 50:1	Nm	4.6	4.6	3.8	3.8	4.6	3.8	4.4	4.6

DRAWING (mm)



PHOTO



MODEL NO. DESIGNATION

S80A - GEAR RATIO

Example: S80A-003

ACCESSORIES¹



C = customizations are offered on demand even for smaller quantities. Typical customizations are indicated with a green dot at column end. Please contact us for any customization request.

GEARBOX DATA		C																												
Gear ratio		3	3.6	5	6	7.5	9	10	12.5	15	18	20	25	30	36	40	50	60	75	90	100	120	150	180	200	250	300	500	600	750
Gearb. nom. torq. ⁴	Nm	8	8	8	8	8	8	8	8	8	8	8	8	8	8	8	8	8	8	8	8	8	8	8	8	8	8	8	8	8
Gearbox efficiency	%	81	81	81	81	81	81	81	81	81	73	73	73	73	73	73	66	66	66	66	66	66	66	66	66	59	59	59	59	
Radial load ⁵	N	150	150	150	150	150	150	150	150	150	300	300	300	300	300	300	300	300	300	300	300	300	300	300	300	300	300	300	300	
Direction of rot.		CW	CW	CW	CW	CW	CW	CW	CW	CW	CW	CCW	CCW	CCW	CCW	CCW	CW	CW	CW	CW	CW	CW	CW	CW	CW	CCW	CCW	CCW	CCW	
Weight	kg	0.8	0.8	0.8	0.8	0.8	0.8	0.8	0.8	0.8	0.8	0.8	0.8	0.8	0.8	0.8	0.8	0.8	0.8	0.8	0.8	0.8	0.8	0.8	0.8	0.8	0.8	0.8	0.8	

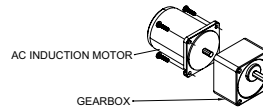
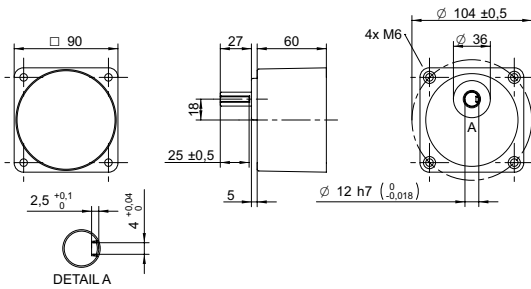
OTHER GEARBOX DATA		C	
Shaft axial load	N	50	
Bearing type		Ball bearing	
Shaft material		40 Cr steel	
Housing material		Aluminum	
Material gear stage		40 Cr steel	
Service life	h	10000	
Performance tolerances		± 15	
Operating temperature	°C	-10 to 40	
IP rating		IP20	
Manufacturing standard		ISO 9001	
CE label UL label		No No	

SPUR GEARBOX RANGE S SERIES ⁴		
Dimension	mm	See separate datasheet.
Gear ratio	W	See separate datasheet.
Compatible models	mm	See separate datasheet.

NOTES	
1.	See page 6 of this catalog.
2.	Gearbox nominal torque.
3.	20 mm from shaft.
4.	Visit www.transmotec.com to view datasheets.

COMPATIBLE MOTORS ⁴		C							
Model		AI-025W-230-SC	AI-025W-400-TC	AI-025W-120-SC/B	AI-025W-208-TC	AIR-025W-230-SC	AIR-025W-120-SC	AIS-025W-230-SC	AIS-025W-120-SC
No. of phases		1	3	1	3	1	3	1	3
Frequency	Hz	50	50	60	60	50	60	50	60
Nominal speed	rpm	1300	1300	1600	1600	1300	1600	90 to 1200	90 to 1200
Nominal torque	mNm	200	200	170	170	200	170	190	190
Nominal current	A	0.23	0.11	0.5	0.17	0.3	0.5	0.23	0.5
Nominal power	W	25	25	25	25	25	25	25	25
Nom. speed at 50:1	rpm	25	25	31	31	25	31	24	24
Nom. torque at 50:1	Nm	7.3	7.3	6.0	6.0	7.3	6.0	6.9	6.9

DRAWING (mm)



PHOTO



MODEL NO. DESIGNATION

S90A - GEAR RATIO

Example: S90A-003

ACCESSORIES¹



● C = customizations are offered on demand even for smaller quantities. Typical customizations are indicated with a green dot at column end. Please contact us for any customization request.

GEARBOX DATA		C																												
Gear ratio		3	3.6	5	6	7.5	9	10	12.5	15	18	20	25	30	36	40	50	60	75	90	100	120	150	180	200	250	300	500	600	750
Gearb. nom. torq. ⁴	Nm	10	10	10	10	10	10	10	10	10	10	10	10	10	10	10	10	10	10	10	10	10	10	10	10	10	10	10	10	10
Gearbox efficiency	%	81	81	81	81	81	81	81	81	81	73	73	73	73	73	73	66	66	66	66	66	66	66	66	59	59	59	59	59	
Radial load ⁵	N	350	350	350	350	350	350	350	350	350	450	450	450	450	450	450	450	450	450	450	450	450	450	450	450	450	450	450	450	
Direction of rot.		CW	CW	CW	CW	CW	CW	CW	CW	CW	CCW	CCW	CCW	CCW	CW	CW	CW	CW	CW	CW	CW	CW	CW	CW	CW	CCW	CCW	CCW	CCW	
Weight	kg	1.4	1.4	1.4	1.4	1.4	1.4	1.4	1.4	1.4	1.4	1.4	1.4	1.4	1.4	1.4	1.4	1.4	1.4	1.4	1.4	1.4	1.4	1.4	1.4	1.4	1.4	1.4	1.4	

OTHER GEARBOX DATA		C	
Shaft axial load	N	100	
Bearing type		Ball bearing	
Shaft material		40 Cr steel	
Housing material		Aluminum	
Material gear stage		40 Cr steel	
Service life	h	10000	
Performance tolerances		± 15	
Operating temperature	°C	-10 to 40	
IP rating		IP20	
Manufacturing standard		ISO 9001	
CE label UL label		No No	

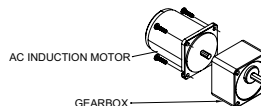
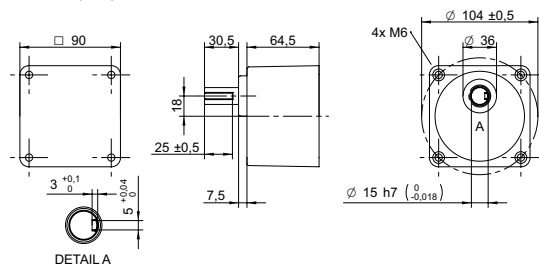
SPUR GEARBOX RANGE S SERIES ⁴		
Dimension	mm	See separate datasheet.
Gear ratio	W	See separate datasheet.
Compatible models	mm	See separate datasheet.

- NOTES**
1. See page 6 of this catalog.
 2. Gearbox nominal torque.
 3. 20 mm from shaft.
 4. Visit www.transmotec.com to view datasheets.

COMPATIBLE MOTORS ⁴		C							
Model		AI-040W-230-SC	AI-040W-400-TC	AI-040W-120-SC/B	AI-040W-208-TC	AIR-040W-230-SC	AIR-040W-120-SC	AIS-040W-230-SC	AIS-040W-120-SC
No. of phases		1	3	1	3	1	3	1	3
Frequency	Hz	50	50	60	60	50	60	50	60
Nominal speed	rpm	1300	1300	1600	1600	1300	1600	90 to 1200	90 to 1200
Nominal torque	mNm	320	320	260	250	320	260	300	260
Nominal current	A	0.4	0.17	0.6	0.25	0.45	0.8	0.4	0.6
Nominal power	W	40	40	40	40	40	40	40	40
Nom. speed at 50:1	rpm	25	25	31	31	25	31	24	24
Nom. torque at 50:1	Nm	10	10	9.5	9.1	10	25	10	9.5

COMPATIBLE MOTORS ⁴		C							
Model		AI-060W-230-SC	AI-060W-400-TC	AI-060W-120-SC/B	AI-060W-208-TC	AIR-060W-230-SC	AIR-060W-120-SC	AIS-060W-230-SC	AIS-060W-120-SC
No. of phases		1	3	1	3	1	3	1	3
Frequency	Hz	50	50	60	60	50	60	50	60
Nominal speed	rpm	1300	1300	1600	1600	1300	1600	90 to 1200	90 to 1200
Nominal torque	mNm	470	470	380	380	470	380	490	490
Nominal current	A	0.55	0.26	0.85	0.4	0.6	1.1	0.55	0.85
Nominal power	W	60	60	60	60	60	60	60	60
Nom. speed at 50:1	rpm	25	25	31	31	25	31	24	24
Nom. torque at 50:1	Nm	10	10	10	10	10	10	10	10

DRAWING (mm)



PHOTO



MODEL NO. DESIGNATION

S90B - GEAR RATIO

Example: S90B-003

ACCESSORIES¹



¹ C = customizations are offered on demand even for smaller quantities. Typical customizations are indicated with a green dot at column end. Please contact us for any customization request.

GEARBOX DATA

	3	3.6	5	6	7.5	9	10	12.5	15	18	20	25	30	36	40	50	60	75	90	100	120	150	180	200
Gear ratio	3	3.6	5	6	7.5	9	10	12.5	15	18	20	25	30	36	40	50	60	75	90	100	120	150	180	200
Gearb. nom. torq. ² Nm	20	20	20	20	20	20	20	20	20	20	20	20	20	20	20	20	20	20	20	20	20	20	20	20
Gearbox efficiency %	81	81	81	81	81	81	81	81	81	81	73	73	73	73	73	66	66	66	66	66	66	66	66	66
Radial load ³ N	500	500	500	500	500	500	600	600	600	600	700	700	700	700	700	700	700	700	700	700	700	700	700	700
Direction of rot.	CW	CW	CW	CW	CW	CW	CCW	CCW	CCW	CCW	CW	CW	CW	CW	CW	CW	CW	CW	CCW	CCW	CCW	CCW	CCW	CCW
Weight kg	1.5	1.5	1.5	1.5	1.5	1.5	1.5	1.5	1.5	1.5	1.5	1.5	1.5	1.5	1.5	1.5	1.5	1.5	1.5	1.5	1.5	1.5	1.5	1.5

OTHER GEARBOX DATA

Shaft axial load	N	150
Bearing type		Ball bearing
Shaft material		40 Cr steel
Housing material		Aluminum
Material gear stage		40 Cr steel
Service life	h	10000
Performance tolerances		± 15
Operating temperature	°C	-10 to 40
IP rating		IP20
Manufacturing standard		ISO 9001
CE label UL label		No No

SPUR GEARBOX RANGE S SERIES⁴

Dimension	mm	See separate datasheet.
Gear ratio	W	See separate datasheet.
Compatible models	mm	See separate datasheet.

NOTES

1. See page 6 of this catalog.
2. Gearbox nominal torque.
3. 20 mm from shaft.
4. Visit www.transmotec.com to view datasheets.

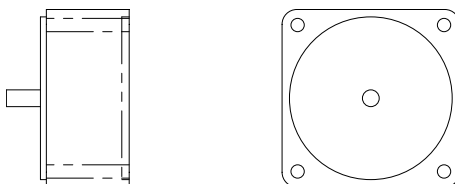
COMPATIBLE MOTORS⁴

Model	AI-090W-230-SC	AI-090W-400-TC	AI-090W-120-SC/B	AI-090W-208-TC	AIR-090W-230-SC	AIR-090W-120-SC	AIS-090W-230-SC	AIS-090W-120-SC
No. of phases	1	3	1	3	1	3	1	3
Frequency Hz	50	50	60	60	50	60	50	60
Nominal speed rpm	1300	1300	1600	1600	1300	1600	90 to 1200	90 to 1200
Nominal torque mNm	700	700	570	570	700	570	710	710
Nominal current A	0.7	0.35	1.5	0.55	0.81	1.5	0.95	1.8
Nominal power W	90	90	90	90	90	90	90	90
Nom. speed at 50:1 rpm	25	25	31	31	25	31	24	24
Nom. torque at 50:1 Nm	20	20	20	20	20	20	20	20

COMPATIBLE MOTORS⁴

Model	AI-120W-230-SC	AI-120W-400-TC	AI-120W-120-SC/B	AI-120W-208-TC	AIR-120W-230-SC	AIR-120W-120-SC	AIS-120W-230-SC	AIS-120W-120-SC
No. of phases	1	3	1	3	1	3	1	3
Frequency Hz	50	50	60	60	50	60	50	60
Nominal speed rpm	1300	1300	1600	1600	1300	1600	90 to 1200	90 to 1200
Nominal torque mNm	930	930	750	750	930	750	750	750
Nominal current A	0.95	0.4	1.8	0.6	1.2	1.9	1.2	1.9
Nominal power W	120	120	120	120	120	120	120	120
Nom. speed at 50:1 rpm	25	25	31	31	25	31	24	24
Nom. torque at 50:1 Nm	20	20	20	20	20	20	20	20

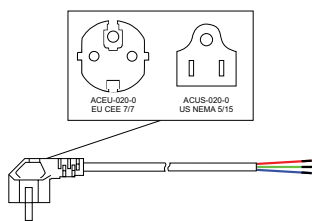
DECIMAL GEARBOX¹



DECIMAL GEARBOX DATA

Model designation	S60A-Y010	S70A-Y010	S80A-Y010	S90A-Y010	S90B-Y010
Gear ratio	10:1	10:1	10:1	10:1	10:1
Gearbox nominal torque	Nm 3	5	8	10	20
Description	Connected between AC motor and existing gearbox to decrease the speed further than the gear ratio listed in the table.				
Compatible models	AIR-006W	AIR-015W	AIR-025W	AIR-040W AIR-060W	AIR-090W AIR-120W

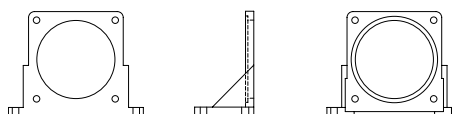
POWER CABLE



POWER CABLE DATA

Model designation	ACEU-020-0 ACUS-020-0	
Standard	EU CEE 7/7 US NEMA 5/15	
Cable length	m ft	2 8
Compatible models	All	

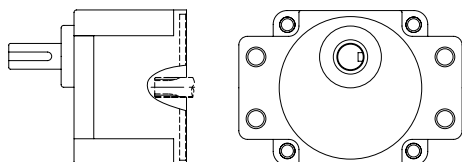
MOUNTING BRACKET



MOUNTING BRACKET DATA

Model designation	AMB-080	AMB-090
Dimensions	mm 80x80	90x90
Compatible models	AIR-025W AIR-040W AIR-060W	AIR-090W AIR-120W

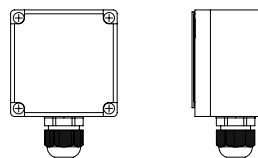
GEARBOX FLANGE MOUNTING



GEARBOX FLANGE MOUNTING DATA

Model designation	Contact us for more information.
Compatible models	AIR-090W AIR-120W

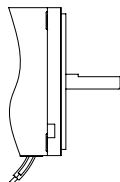
TERMINAL BOX



TERMINAL BOX DATA

Model designation	See model no. designation to order correct part number.
Compatible models	AIR-025W AIR-040W AIR-060W AIR-090W AIR-120W

OUTPUT SHAFT D-CUT



OUTPUT SHAFT D-CUT DATA

Model designation	Contact us for more information.
Compatible models	All

NOTES

1. Visit www.transmotec.com to view datasheets.