



OPEN FRAME SOLENOIDS | PULL TYPE

We offer a broad range of high quality solenoids in standard and customized configurations. Our customer-centric approach makes us the ideal supplier for your project, especially to instrument and apparatus builders. In addition, we offer immediate delivery, thanks to always having a high number of motors in stock.

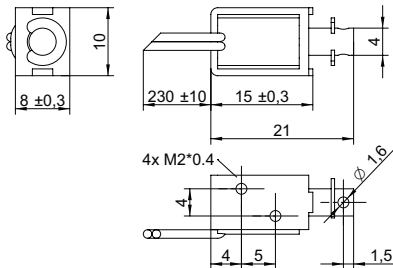
Customizations include:

- ✓ Customized harness
- ✓ Winding configuration
- ✓ Shaft configuration
- ✓ And more...

TABLE OF CONTENTS

MODEL	LENGTH mm	WIDTH mm	HEIGHT mm	PAGE
F0415L	15	8	10	1
F0520L	20	13	16	2
F0530L	30	10	15	3
F0626L	26	16	20	4
F0630L	29.5	19	16	5
F0730L	30.2	16	14	6
F0826L	26	25	22	7
F0837L	37	26	20	8
F1037L	37	26	20	9
F1039L	39	20	26	10
F1040L	40	24	29	11
F1250L	50	37	41	12
F1253L	53.5	27	30	13
F1564L	64	38	30	14
F1578L	78	44	51	15
F1585L	85	35	40	16
F1683L	84	52	58	17

DRAWING (mm)



PHOTO



MODEL NO. DESIGNATION

F0415L - VOLTAGE

Example: F0415L-03V

ACCESSORIES

● C = customizations are offered on demand even for smaller quantities. Typical customizations are indicated with a green dot at column end. Please contact us for any customization request.

SOLENOID DATA

Duty cycle	%	100	50	25	10
Power	W	0.8	1.6	3.2	8
Max. time in energized state	s	∞	50	18	3

PERFORMANCE DATA F0415L-03V

Duty cycle	%	100	50	25	10
Individual voltages	V	3	4.2	6	9.5
Resistance	Ω	11			

PERFORMANCE DATA F0415L-06V

Duty cycle	%	100	50	25	10
Individual voltages	V	6	8.5	12	19
Resistance	Ω	45			

PERFORMANCE DATA F0415L-12V

Duty cycle	%	100	50	25	10
Individual voltages	V	12	17	24	38
Resistance	Ω	180			

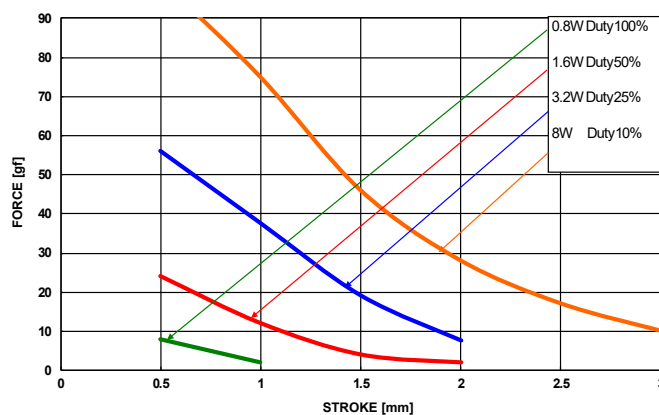
PERFORMANCE DATA F0415L-24V

Duty cycle	%	100	50	25	10
Individual voltages	V	24	34	48	76
Resistance	Ω	720			

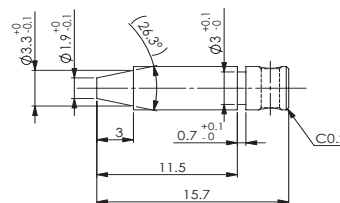
SOLENOID FEATURES AND STANDARD DATA

Type	Pull type DC solenoid		●
Nominal voltage range ¹	V	3 to 24	●
Loading force ²	N	0.034	
Cable	Flying wires		●
Cable length	mm	230	
Service life	At least 500000 single strokes		
Return spring	Yes		
Plunger material	Carbon steel 12L14		
IP rating	IP00		
Insulation class	B		
Weight	g	5.4	
Operating temperature	°C	-5 to 40	
Manufacturing standard	ISO9001:2008 ISO/TS 16949:2002		
CE label UL label	No No		

PERFORMANCE GRAPH



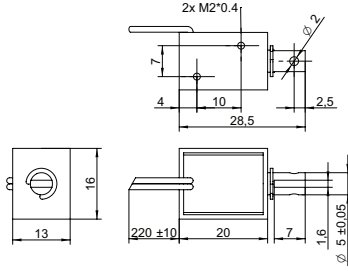
PLUNGER PROFILE



NOTES

- Nominal voltages, 100 % duty cycle.
- At 3.5 mm compression.

DRAWING (mm)



PHOTO



MODEL NO. DESIGNATION

F0520L - VOLTAGE

Example: F0520L-06V

ACCESSORIES

● C = customizations are offered on demand even for smaller quantities. Typical customizations are indicated with a green dot at column end. Please contact us for any customization request.

SOLENOID DATA

		C			
Duty cycle	%	100	50	25	10
Power	W	1.6	3.2	6.4	16
Max. time in energized state	s	∞	55	19	3

PERFORMANCE DATA F0520L-06V

		C			
Duty cycle	%	100	50	25	10
Individual voltages	V	6	8.5	12	19
Resistance	Ω	23			

PERFORMANCE DATA F0520L-12V

		C			
Duty cycle	%	100	50	25	10
Individual voltages	V	12	17	24	38
Resistance	Ω	90			

PERFORMANCE DATA F0520L-24V

		C			
Duty cycle	%	100	50	25	10
Individual voltages	V	24	34	48	76
Resistance	Ω	360			

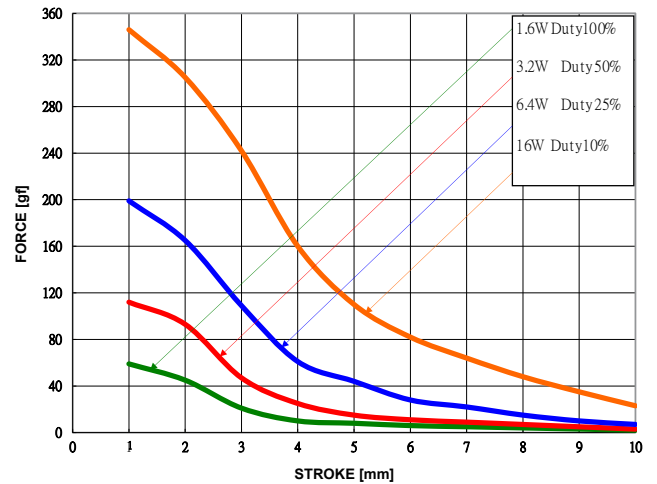
PERFORMANCE DATA F0520L-48V

		C			
Duty cycle	%	100	50	25	10
Individual voltages	V	48	68	96	152
Resistance	Ω	1440			

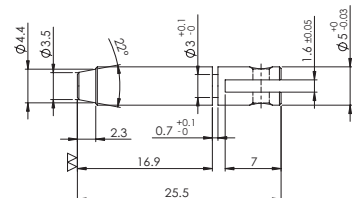
SOLENOID FEATURES AND STANDARD DATA

		C	
Type		Pull type DC solenoid	●
Nominal voltage range ¹	V	6 to 48	●
Loading force ²	N	0.18	
Cable		Flying wires	●
Cable length	mm	230	
Service life		At least 500000 single strokes	
Return spring		Yes	
Plunger material		Carbon steel 12L14	
IP rating		IP00	
Insulation class		B	
Weight	g	18	
Operating temperature	°C	-5 to 40	
Manufacturing standard		ISO9001:2008 ISO/TS 16949:2002	
CE label UL label		No No	

PERFORMANCE GRAPH



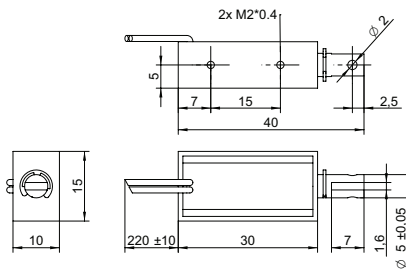
PLUNGER PROFILE



NOTES

- Nominal voltages, 100 % duty cycle.
- At 3 mm compression.

DRAWING (mm)



PHOTO



MODEL NO. DESIGNATION

F0530L - VOLTAGE

Example: F0530L-06V

ACCESSORIES

● C = customizations are offered on demand even for smaller quantities. Typical customizations are indicated with a green dot at column end. Please contact us for any customization request.

SOLENOID DATA

	%	100	50	25	10
Duty cycle					
Power	W	1.7	3.4	6.8	17
Max. time in energized state	s	∞	50	18	2

PERFORMANCE DATA F0530L-06V

	%	100	50	25	10
Duty cycle					
Individual voltages	V	6	8.5	12	19
Resistance	Ω	22			

PERFORMANCE DATA F0530L-12V

	%	100	50	25	10
Duty cycle					
Individual voltages	V	12	17	24	38
Resistance	Ω	85			

PERFORMANCE DATA F0530L-24V

	%	100	50	25	10
Duty cycle					
Individual voltages	V	24	34	48	76
Resistance	Ω	339			

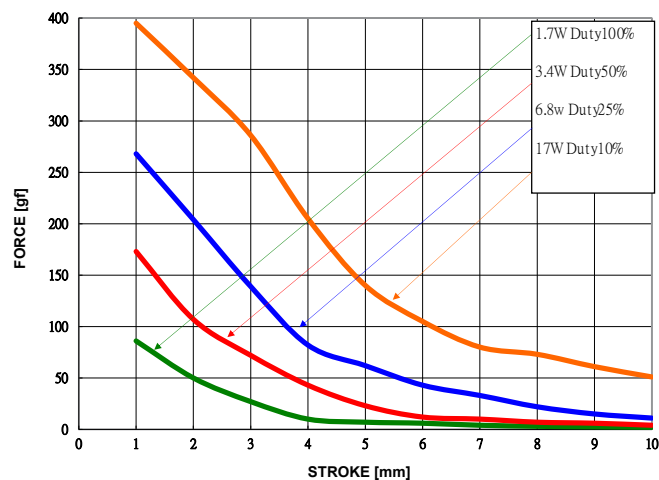
PERFORMANCE DATA F0530L-48V

	%	100	50	25	10
Duty cycle					
Individual voltages	V	48	68	96	152
Resistance	Ω	1355			

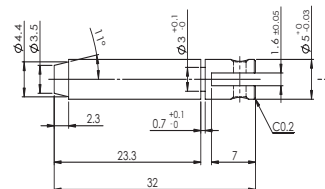
SOLENOID FEATURES AND STANDARD DATA

Type	Pull type DC solenoid		●
Nominal voltage range ¹	V	6 to 48	●
Loading force ²	N	0.18	
Cable	Flying wires		●
Cable length	mm	230	
Service life	At least 500000 single strokes		
Return spring	Yes		
Plunger material	Carbon steel 12L14		
IP rating	IP00		
Insulation class	B		
Weight	g	23	
Operating temperature	°C	-5 to 40	
Manufacturing standard	ISO9001:2008 ISO/TS 16949:2002		
CE label UL label	No No		

PERFORMANCE GRAPH



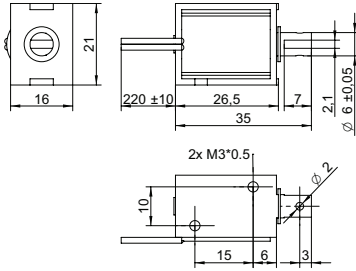
PLUNGER PROFILE



NOTES

1. Nominal voltages, 100 % duty cycle.
2. At 3 mm compression.

DRAWING (mm)



PHOTO



MODEL NO. DESIGNATION

F0626L - VOLTAGE

Example: F0626L-06V

ACCESSORIES

● C = customizations are offered on demand even for smaller quantities. Typical customizations are indicated with a green dot at column end. Please contact us for any customization request.

SOLENOID DATA

	%	100	50	25	10
Duty cycle					
Power	W	2.1	4.2	8.4	21
Max. time in energized state	s	∞	55	19	3

PERFORMANCE DATA F0626L-06V

	%	100	50	25	10
Duty cycle					
Individual voltages	V	6	8.5	12	19
Resistance	Ω	17			

PERFORMANCE DATA F0626L-12V

	%	100	50	25	10
Duty cycle					
Individual voltages	V	12	17	24	38
Resistance	Ω	69			

PERFORMANCE DATA F0626L-24V

	%	100	50	25	10
Duty cycle					
Individual voltages	V	24	34	48	76
Resistance	Ω	275			

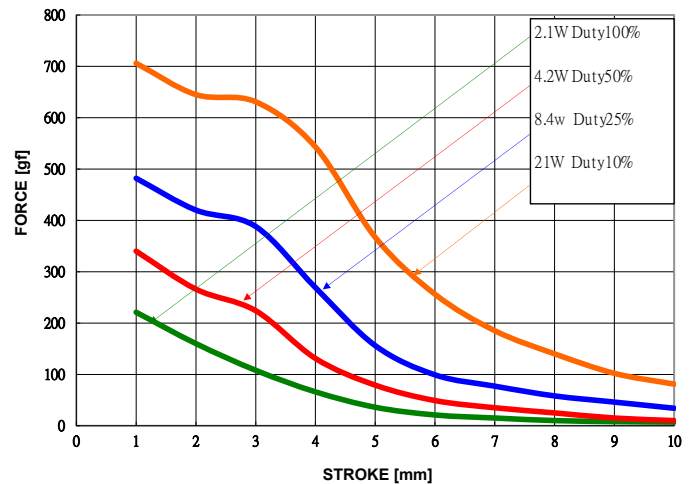
PERFORMANCE DATA F0626L-48V

	%	100	50	25	10
Duty cycle					
Individual voltages	V	48	68	96	152
Resistance	Ω	1095			

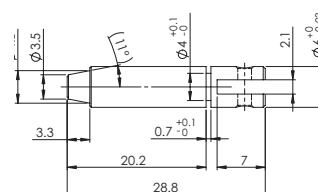
SOLENOID FEATURES AND STANDARD DATA

Type	Pull type DC solenoid		●
Nominal voltage range ¹	V	6 to 48	●
Loading force ²	N	0.29	
Cable	Flying wires		●
Cable length	mm	230	
Service life	At least 500000 single strokes		
Return spring	Yes		
Plunger material	Carbon steel 12L14		
IP rating	IP00		
Insulation class	B		
Weight	g	43	
Operating temperature	°C	-5 to 40	
Manufacturing standard	ISO9001:2008 ISO/TS 16949:2002		
CE label UL label	No No		

PERFORMANCE GRAPH



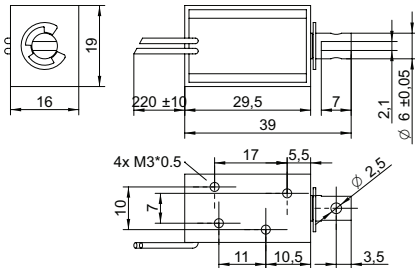
PLUNGER PROFILE



NOTES

1. Nominal voltages, 100 % duty cycle.
2. At 1 mm compression.

DRAWING (mm)



PHOTO



MODEL NO. DESIGNATION

F0630L - VOLTAGE

Example: F0630L-06V

ACCESSORIES

● C = customizations are offered on demand even for smaller quantities. Typical customizations are indicated with a green dot at column end. Please contact us for any customization request.

SOLENOID DATA

Duty cycle	%	100	50	25	10
Power	W	2.4	4.8	9.6	24
Max. time in energized state	s	∞	55	19	3

PERFORMANCE DATA F0630L-06V

Duty cycle	%	100	50	25	10
Individual voltages	V	6	8.5	12	19
Resistance	Ω	15			

PERFORMANCE DATA F0630L-12V

Duty cycle	%	100	50	25	10
Individual voltages	V	12	17	24	38
Resistance	Ω	60			

PERFORMANCE DATA F0630L-24V

Duty cycle	%	100	50	25	10
Individual voltages	V	24	34	48	76
Resistance	Ω	240			

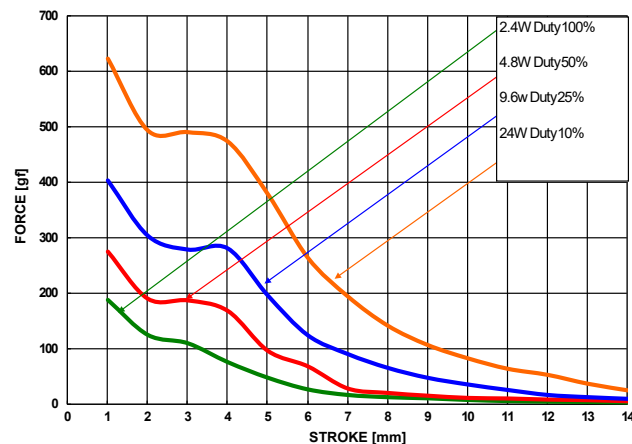
PERFORMANCE DATA F0630L-48V

Duty cycle	%	100	50	25	10
Individual voltages	V	48	68	96	152
Resistance	Ω	960			

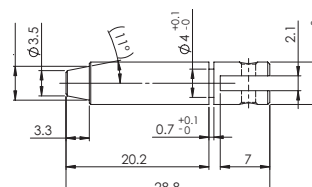
SOLENOID FEATURES AND STANDARD DATA

Type	Pull type DC solenoid		●
Nominal voltage range ¹	V	6 to 48	●
Loading force ²	N	0.29	
Cable	Flying wires		●
Cable length	mm	230	
Service life	At least 500000 single strokes		
Return spring	Yes		
Plunger material	Carbon steel 12L14		
IP rating	IP00		
Insulation class	B		
Weight	g	42	
Operating temperature	°C	-5 to 40	
Manufacturing standard	ISO9001:2008 ISO/TS 16949:2002		
CE label UL label	No No		

PERFORMANCE GRAPH



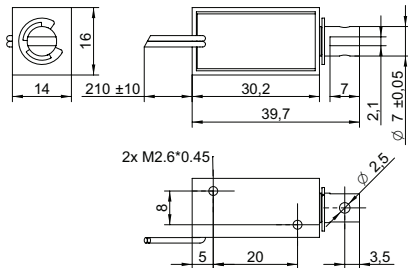
PLUNGER PROFILE



NOTES

- Nominal voltages, 100 % duty cycle.
- At 1 mm compression.

DRAWING (mm)



PHOTO



MODEL NO. DESIGNATION

F0730L - VOLTAGE

Example: F0730L-06V

ACCESSORIES

● C = customizations are offered on demand even for smaller quantities. Typical customizations are indicated with a green dot at column end. Please contact us for any customization request.

SOLENOID DATA

		C			
Duty cycle	%	100	50	25	10
Power	W	2.2	4.4	8.8	22
Max. time in energized state	s	∞	55	19	3

PERFORMANCE DATA F0730L-06V

		C			
Duty cycle	%	100	50	25	10
Individual voltages	V	6	8.5	12	19
Resistance	Ω	16			

PERFORMANCE DATA F0730L-12V

		C			
Duty cycle	%	100	50	25	10
Individual voltages	V	12	17	24	38
Resistance	Ω	66			

PERFORMANCE DATA F0730L-24V

		C			
Duty cycle	%	100	50	25	10
Individual voltages	V	24	34	48	76
Resistance	Ω	262			

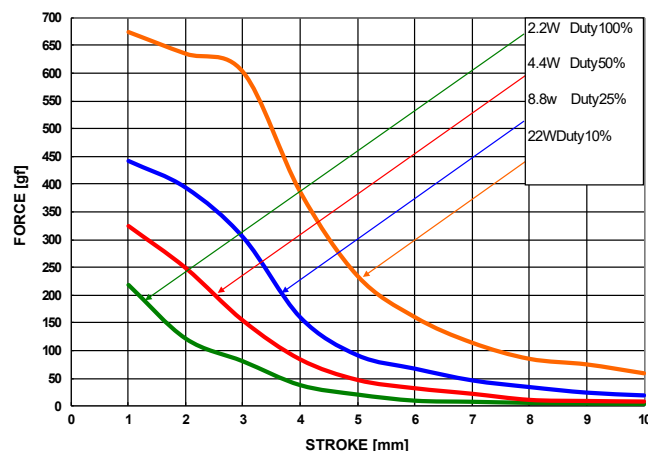
PERFORMANCE DATA F0730L-48V

		C			
Duty cycle	%	100	50	25	10
Individual voltages	V	48	68	96	152
Resistance	Ω	1047			

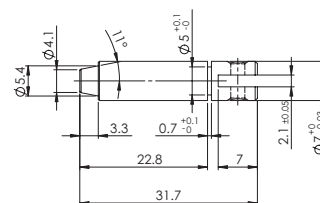
SOLENOID FEATURES AND STANDARD DATA

		C	
Type		Pull type DC solenoid	●
Nominal voltage range ¹	V	6 to 48	●
Loading force ²	N	0.91	
Cable		Flying wires	●
Cable length	mm	230	
Service life		At least 500000 single strokes	
Return spring		Yes	
Plunger material		Carbon steel 12L14	
IP rating		IP00	
Insulation class		B	
Weight	g	33	
Operating temperature	°C	-5 to 40	
Manufacturing standard		ISO9001:2008 ISO/TS 16949:2002	
CE label UL label		No No	

PERFORMANCE GRAPH



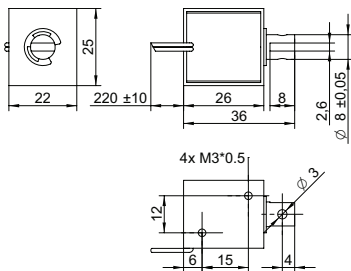
PLUNGER PROFILE



NOTES

- Nominal voltages, 100 % duty cycle.
- At 1 mm compression.

DRAWING (mm)



PHOTO



MODEL NO. DESIGNATION

F0826L - VOLTAGE

Example: F0826L-06V

ACCESSORIES

● C = customizations are offered on demand even for smaller quantities. Typical customizations are indicated with a green dot at column end. Please contact us for any customization request.

SOLENOID DATA

	%	100	50	25	10
Duty cycle	%	100	50	25	10
Power	W	2.8	5.6	11	28
Max. time in energized state	s	∞	100	36	7

PERFORMANCE DATA F0826L-06V

	%	100	50	25	10
Duty cycle	%	100	50	25	10
Individual voltages	V	6	8.5	12	19
Resistance	Ω	13			

PERFORMANCE DATA F0826L-12V

	%	100	50	25	10
Duty cycle	%	100	50	25	10
Individual voltages	V	12	17	24	38
Resistance	Ω	51			

PERFORMANCE DATA F0826L-24V

	%	100	50	25	10
Duty cycle	%	100	50	25	10
Individual voltages	V	24	34	48	76
Resistance	Ω	206			

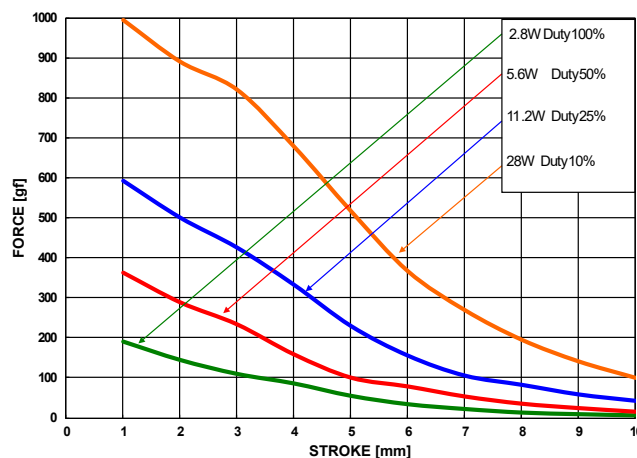
PERFORMANCE DATA F0826L-48V

	%	100	50	25	10
Duty cycle	%	100	50	25	10
Individual voltages	V	48	68	96	152
Resistance	Ω	823			

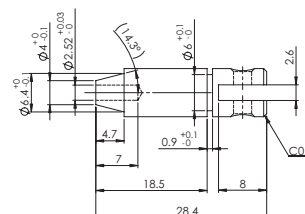
SOLENOID FEATURES AND STANDARD DATA

Type	Pull type DC solenoid		●
Nominal voltage range ¹	V	6 to 48	●
Loading force ²	N	0.76	
Cable	Flying wires		●
Cable length	mm	230	
Service life	At least 500000 single strokes		
Return spring	Yes		
Plunger material	Carbon steel 12L14		
IP rating	IP00		
Insulation class	B		
Weight	g	66	
Operating temperature	°C	-5 to 40	
Manufacturing standard	ISO9001:2008 ISO/TS 16949:2002		
CE label UL label	No No		

PERFORMANCE GRAPH



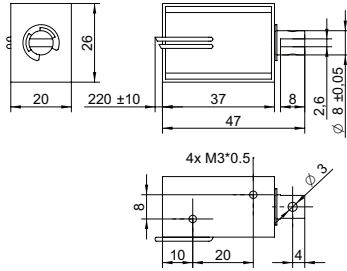
PLUNGER PROFILE



NOTES

1. Nominal voltages, 100 % duty cycle.
2. At 3 mm compression.

DRAWING (mm)



PHOTO



MODEL NO. DESIGNATION

F0837L - VOLTAGE

Example: F0837L-06V

ACCESSORIES

● C = customizations are offered on demand even for smaller quantities. Typical customizations are indicated with a green dot at column end. Please contact us for any customization request.

SOLENOID DATA

	%	100	50	25	10
Duty cycle					
Power	W	4	8	16	40
Max. time in energized state	s	∞	100	36	7

PERFORMANCE DATA F0837L-06V

	%	100	50	25	10
Duty cycle					
Individual voltages	V	6	8.5	12	19
Resistance	Ω	9			

PERFORMANCE DATA F0837L-12V

	%	100	50	25	10
Duty cycle					
Individual voltages	V	12	17	24	38
Resistance	Ω	36			

PERFORMANCE DATA F0837L-24V

	%	100	50	25	10
Duty cycle					
Individual voltages	V	24	34	48	76
Resistance	Ω	144			

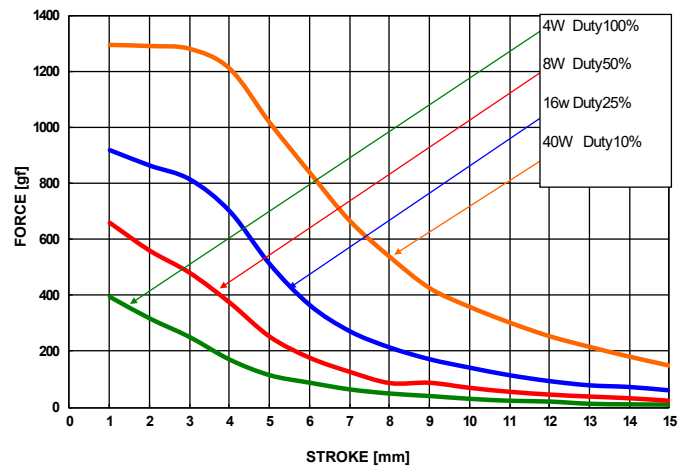
PERFORMANCE DATA F0837L-48V

	%	100	50	25	10
Duty cycle					
Individual voltages	V	48	68	96	152
Resistance	Ω	576			

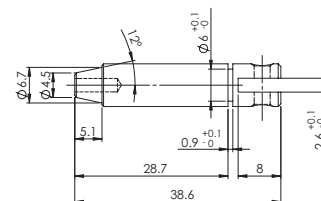
SOLENOID FEATURES AND STANDARD DATA

Type	Pull type DC solenoid		●
Nominal voltage range ¹	V	6 to 48	●
Loading force ²	N	0.47	
Cable	Flying wires		●
Cable length	mm	230	
Service life	At least 500000 single strokes		
Return spring	Yes		
Plunger material	Carbon steel 12L14		
IP rating	IP00		
Insulation class	B		
Weight	g	96	
Operating temperature	°C	-5 to 40	
Manufacturing standard	ISO9001:2008 ISO/TS 16949:2002		
CE label UL label	No No		

PERFORMANCE GRAPH



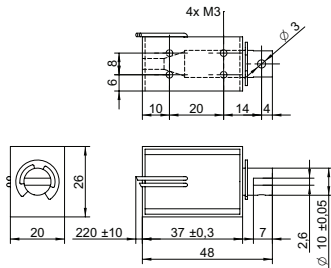
PLUNGER PROFILE



NOTES

- Nominal voltages, 100 % duty cycle.
- At 5 mm compression.

DRAWING (mm)



PHOTO



MODEL NO. DESIGNATION

F1037L - VOLTAGE

Example: F1037L-06V

ACCESSORIES

● C = customizations are offered on demand even for smaller quantities. Typical customizations are indicated with a green dot at column end. Please contact us for any customization request.

SOLENOID DATA

	%	100	50	25	10
Duty cycle	%	100	50	25	10
Power	W	4	8	16	40
Max. time in energized state	s	∞	100	36	7

PERFORMANCE DATA F1037L-06V

	%	100	50	25	10
Duty cycle	%	100	50	25	10
Individual voltages	V	6	8.5	12	19
Resistance	Ω	9			

PERFORMANCE DATA F1037L-12V

	%	100	50	25	10
Duty cycle	%	100	50	25	10
Individual voltages	V	12	17	24	38
Resistance	Ω	36			

PERFORMANCE DATA F1037L-24V

	%	100	50	25	10
Duty cycle	%	100	50	25	10
Individual voltages	V	24	34	48	76
Resistance	Ω	144			

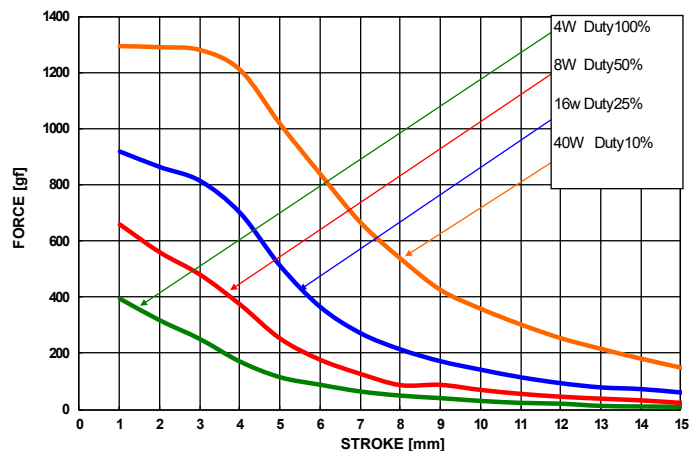
PERFORMANCE DATA F1037L-48V

	%	100	50	25	10
Duty cycle	%	100	50	25	10
Individual voltages	V	48	68	96	152
Resistance	Ω	576			

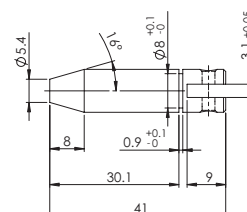
SOLENOID FEATURES AND STANDARD DATA

Type	Pull type DC solenoid ●	
Nominal voltage range ¹	V	6 to 48 ●
Loading force ²	N	0.59
Cable	Flying wires ●	
Cable length	mm	230
Service life	At least 500000 single strokes	
Return spring	Yes	
Plunger material	Carbon steel 12L14	
IP rating	IP00	
Insulation class	B	
Weight	g	96
Operating temperature	°C	-5 to 40
Manufacturing standard	ISO9001:2008 ISO/TS 16949:2002	
CE label UL label	No No	

PERFORMANCE GRAPH



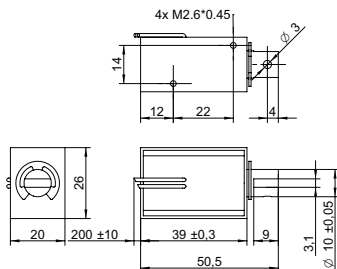
PLUNGER PROFILE



NOTES

1. Nominal voltages, 100 % duty cycle.
2. At 5 mm compression.

DRAWING (mm)



PHOTO



MODEL NO. DESIGNATION

F1039L - VOLTAGE

Example: F1039L-06V

ACCESSORIES

● C = customizations are offered on demand even for smaller quantities. Typical customizations are indicated with a green dot at column end. Please contact us for any customization request.

SOLENOID DATA

		C			
Duty cycle	%	100	50	25	10
Power	W	2.8	5.6	11	28
Max. time in energized state	s	∞	140	50	9

PERFORMANCE DATA F1039L-06V

		C			
Duty cycle	%	100	50	25	10
Individual voltages	V	6	8.5	12	19
Resistance	Ω	13			

PERFORMANCE DATA F1039L-12V

		C			
Duty cycle	%	100	50	25	10
Individual voltages	V	12	17	24	38
Resistance	Ω	51			

PERFORMANCE DATA F1039L-24V

		C			
Duty cycle	%	100	50	25	10
Individual voltages	V	24	34	48	76
Resistance	Ω	206			

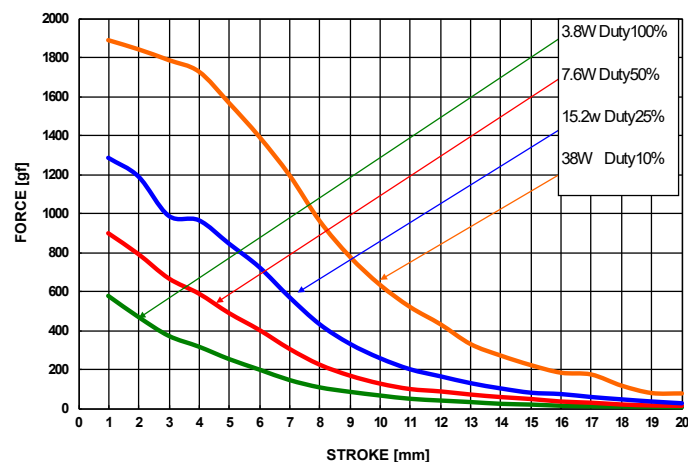
PERFORMANCE DATA F1039L-48V

		C			
Duty cycle	%	100	50	25	10
Individual voltages	V	48	68	96	152
Resistance	Ω	823			

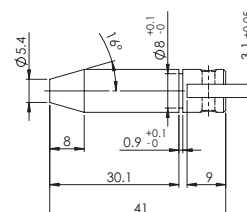
SOLENOID FEATURES AND STANDARD DATA

		C	
Type		Pull type DC solenoid	●
Nominal voltage range ¹	V	6 to 48	●
Loading force ²	N	0.59	
Cable		Flying wires	●
Cable length	mm	230	
Service life		At least 500000 single strokes	
Return spring		Yes	
Plunger material		Carbon steel 12L14	
IP rating		IP00	
Insulation class		B	
Weight	g	110	
Operating temperature	°C	-5 to 40	
Manufacturing standard		ISO9001:2008 ISO/TS 16949:2002	
CE label UL label		No No	

PERFORMANCE GRAPH



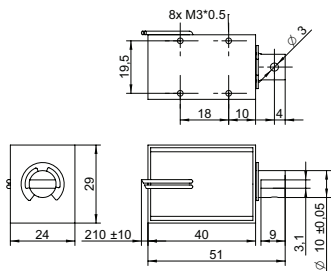
PLUNGER PROFILE



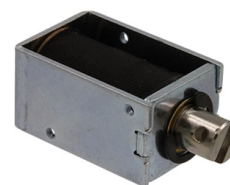
NOTES

- Nominal voltages, 100 % duty cycle.
- At 5 mm compression.

DRAWING (mm)



PHOTO



MODEL NO. DESIGNATION

F1040L - VOLTAGE

Example: F1040L-06V

ACCESSORIES

● C = customizations are offered on demand even for smaller quantities. Typical customizations are indicated with a green dot at column end. Please contact us for any customization request.

SOLENOID DATA

	%	100	50	25	10
Duty cycle		100	50	25	10
Power	W	4.2	8.4	17	42
Max. time in energized state	s	∞	100	36	7

PERFORMANCE DATA F1040L-06V

	%	100	50	25	10
Duty cycle		100	50	25	10
Individual voltages	V	6	8.5	12	19
Resistance	Ω	13			

PERFORMANCE DATA F1040L-12V

	%	100	50	25	10
Duty cycle		100	50	25	10
Individual voltages	V	12	17	24	38
Resistance	Ω	51			

PERFORMANCE DATA F1040L-48V

	%	100	50	25	10
Duty cycle		100	50	25	10
Individual voltages	V	24	34	48	76
Resistance	Ω	206			

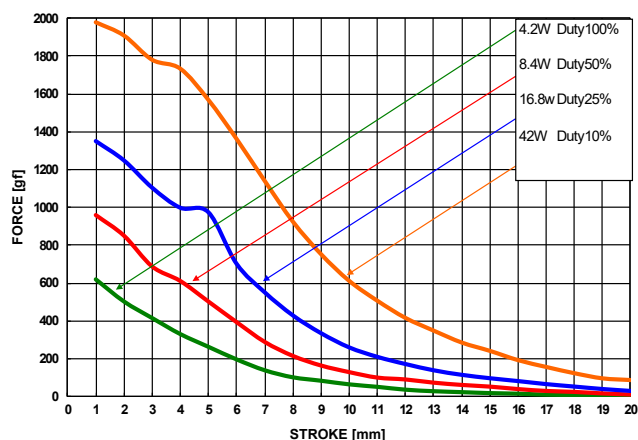
PERFORMANCE DATA F1040L-48V

	%	100	50	25	10
Duty cycle		100	50	25	10
Individual voltages	V	48	68	96	152
Resistance	Ω	823			

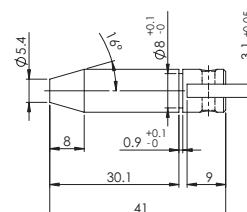
SOLENOID FEATURES AND STANDARD DATA

Type	Pull type DC solenoid		●
Nominal voltage range ¹	V	6 to 48	●
Loading force ²	N	0.59	
Cable	Flying wires		●
Cable length	mm	230	
Service life	At least 500000 single strokes		
Return spring	Yes		
Plunger material	Carbon steel 12L14		
IP rating	IP00		
Insulation class	B		
Weight	g	120	
Operating temperature	°C	-5 to 40	
Manufacturing standard	ISO9001:2008 ISO/TS 16949:2002		
CE label UL label	No No		

PERFORMANCE GRAPH



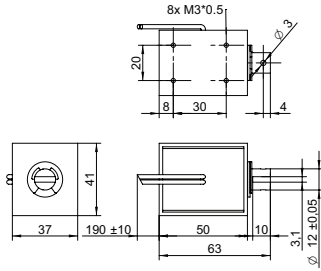
PLUNGER PROFILE



NOTES

- Nominal voltages, 100 % duty cycle.
- At 5 mm compression.

DRAWING (mm)



PHOTO



MODEL NO. DESIGNATION

F1250L - VOLTAGE

Example: F1250L-06V

ACCESSORIES

● C = customizations are offered on demand even for smaller quantities. Typical customizations are indicated with a green dot at column end. Please contact us for any customization request.

SOLENOID DATA

Duty cycle	%	100	50	25	10
Power	W	7.5	15	30	75
Max. time in energized state	s	∞	140	50	9

PERFORMANCE DATA F1250L-06V

Duty cycle	%	100	50	25	10
Individual voltages	V	6	8.5	12	19
Resistance	Ω	4.8			

PERFORMANCE DATA F1250L-12V

Duty cycle	%	100	50	25	10
Individual voltages	V	12	17	24	38
Resistance	Ω	19			

PERFORMANCE DATA F1250L-24V

Duty cycle	%	100	50	25	10
Individual voltages	V	24	34	48	76
Resistance	Ω	77			

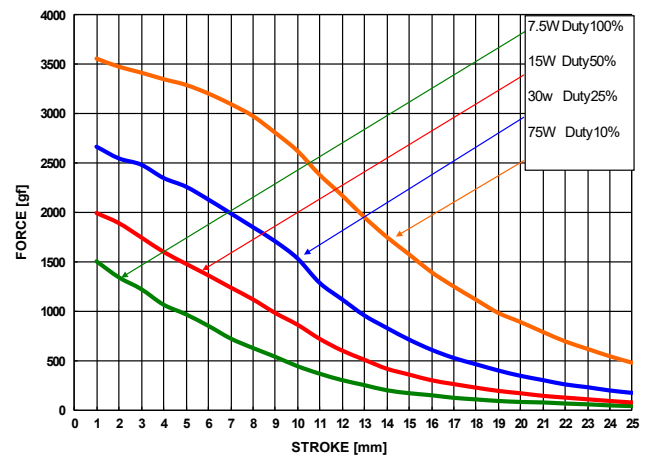
PERFORMANCE DATA F1250L-48V

Duty cycle	%	100	50	25	10
Individual voltages	V	48	68	96	152
Resistance	Ω	307			

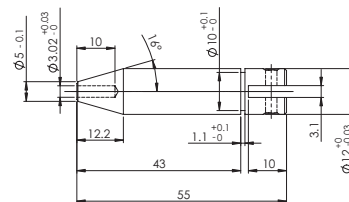
SOLENOID FEATURES AND STANDARD DATA

Type	Pull type DC solenoid		●
Nominal voltage range ¹	V	6 to 48	●
Loading force ²	N	0.83	
Cable	Flying wires		●
Cable length	mm	230	
Service life	At least 500000 single strokes		
Return spring	Yes		
Plunger material	Carbon steel 12L14		
IP rating	IP00		
Insulation class	B		
Weight	g	320	
Operating temperature	°C	-5 to 40	
Manufacturing standard	ISO9001:2008 ISO/TS 16949:2002		
CE label UL label	No No		

PERFORMANCE GRAPH



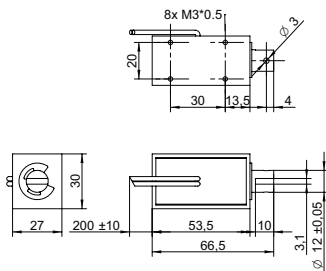
PLUNGER PROFILE



NOTES

- Nominal voltages, 100 % duty cycle.
- At 20 mm compression.

DRAWING (mm)



PHOTO



MODEL NO. DESIGNATION

F1253L - VOLTAGE

Example: F1253L-06V

ACCESSORIES

● C = customizations are offered on demand even for smaller quantities. Typical customizations are indicated with a green dot at column end. Please contact us for any customization request.

SOLENOID DATA

	%	100	50	25	10
Duty cycle		100	50	25	10
Power	W	6	12	24	60
Max. time in energized state	s	∞	140	50	9

PERFORMANCE DATA F1253L-06V

	%	100	50	25	10
Duty cycle		100	50	25	10
Individual voltages	V	6	8.5	12	19
Resistance	Ω	6			

PERFORMANCE DATA F1253L-12V

	%	100	50	25	10
Duty cycle		100	50	25	10
Individual voltages	V	12	17	24	38
Resistance	Ω	24			

PERFORMANCE DATA F1253L-24V

	%	100	50	25	10
Duty cycle		100	50	25	10
Individual voltages	V	24	34	48	76
Resistance	Ω	96			

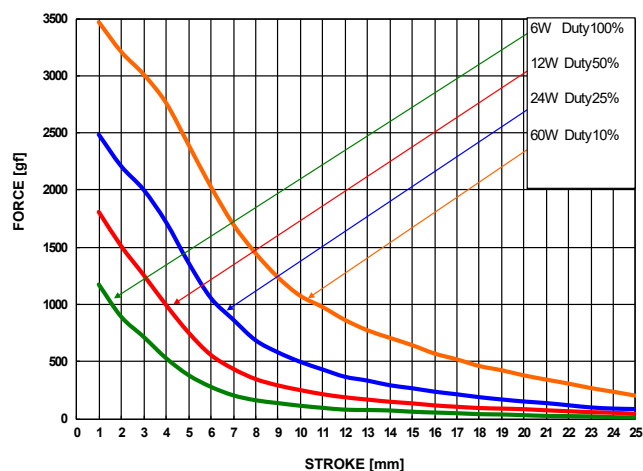
PERFORMANCE DATA F1253L-48V

	%	100	50	25	10
Duty cycle		100	50	25	10
Individual voltages	V	48	68	96	152
Resistance	Ω	384			

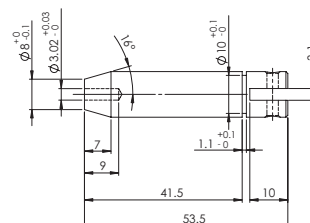
SOLENOID FEATURES AND STANDARD DATA

Type	Pull type DC solenoid		●
Nominal voltage range ¹	V	6 to 48	●
Loading force ²	N	0.83	
Cable	Flying wires		●
Cable length	mm	230	
Service life	At least 500000 single strokes		
Return spring	Yes		
Plunger material	Carbon steel 12L14		
IP rating	IP00		
Insulation class	B		
Weight	g	210	
Operating temperature	°C	-5 to 40	
Manufacturing standard	ISO9001:2008 ISO/TS 16949:2002		
CE label UL label	No No		

PERFORMANCE GRAPH



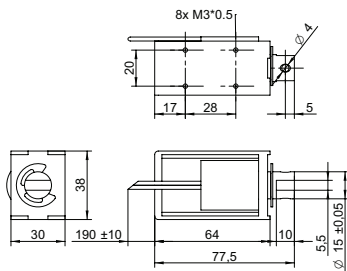
PLUNGER PROFILE



NOTES

- Nominal voltages, 100 % duty cycle.
- At 20 mm compression.

DRAWING (mm)



PHOTO



MODEL NO. DESIGNATION

F1564L - VOLTAGE

Example: F1564L-06V

ACCESSORIES

● C = customizations are offered on demand even for smaller quantities. Typical customizations are indicated with a green dot at column end. Please contact us for any customization request.

SOLENOID DATA

	%	100	50	25	10
Duty cycle		100	50	25	10
Power	W	8	16	32	80
Max. time in energized state	s	∞	140	50	9

PERFORMANCE DATA F1564L-06V

	%	100	50	25	10
Duty cycle		100	50	25	10
Individual voltages	V	6	8.5	12	19
Resistance	Ω	6			

PERFORMANCE DATA F1564L-12V

	%	100	50	25	10
Duty cycle		100	50	25	10
Individual voltages	V	12	17	24	38
Resistance	Ω	24			

PERFORMANCE DATA F1564L-24V

	%	100	50	25	10
Duty cycle		100	50	25	10
Individual voltages	V	24	34	48	76
Resistance	Ω	96			

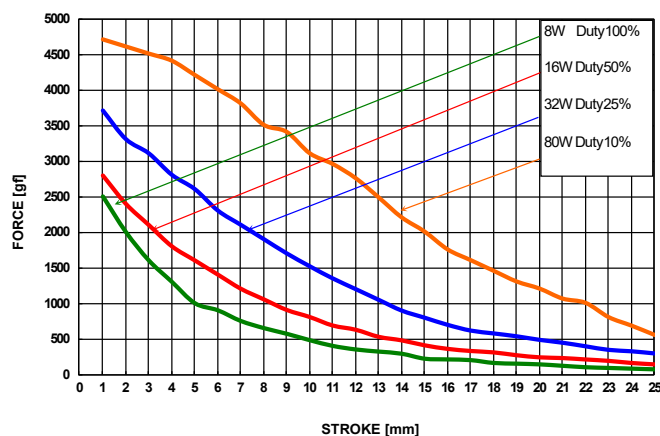
PERFORMANCE DATA F1564L-48V

	%	100	50	25	10
Duty cycle		100	50	25	10
Individual voltages	V	48	68	96	152
Resistance	Ω	384			

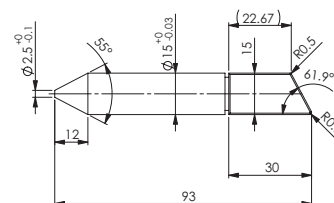
SOLENOID FEATURES AND STANDARD DATA

Type	Pull type DC solenoid		●
Nominal voltage range ¹	V	6 to 48	●
Loading force ²	N	3.6	
Cable	Flying wires		●
Cable length	mm	230	
Service life	At least 500000 single strokes		
Return spring	Yes		
Plunger material	Carbon steel 12L14		
IP rating	IP00		
Insulation class	B		
Weight	g	363	
Operating temperature	°C	-5 to 40	
Manufacturing standard	ISO9001:2008 ISO/TS 16949:2002		
CE label UL label	No No		

PERFORMANCE GRAPH



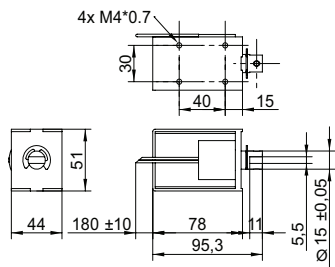
PLUNGER PROFILE



NOTES

- Nominal voltages, 100 % duty cycle.
- At 5 mm compression.

DRAWING (mm)



PHOTO



MODEL NO. DESIGNATION

F1578L - VOLTAGE

Example: F1578L-06V

ACCESSORIES

● C = customizations are offered on demand even for smaller quantities. Typical customizations are indicated with a green dot at column end. Please contact us for any customization request.

SOLENOID DATA

	%	100	50	25	10
Duty cycle	%	100	50	25	10
Power	W	13	26	52	130
Max. time in energized state	s	∞	160	80	32

PERFORMANCE DATA F1578L-06V

	%	100	50	25	10
Duty cycle	%	100	50	25	10
Individual voltages	V	6	8.5	12	19
Resistance	Ω	2.8			

PERFORMANCE DATA F1578L-12V

	%	100	50	25	10
Duty cycle	%	100	50	25	10
Individual voltages	V	12	17	24	38
Resistance	Ω	11			

PERFORMANCE DATA F1578L-24V

	%	100	50	25	10
Duty cycle	%	100	50	25	10
Individual voltages	V	24	34	48	76
Resistance	Ω	44			

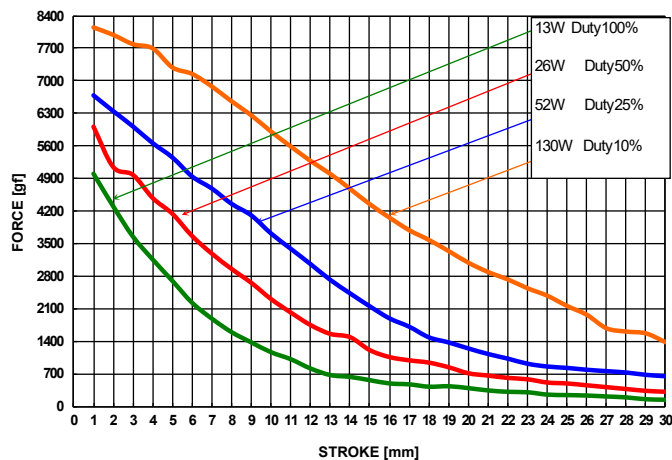
PERFORMANCE DATA F1578L-48V

	%	100	50	25	10
Duty cycle	%	100	50	25	10
Individual voltages	V	48	68	96	152
Resistance	Ω	177			

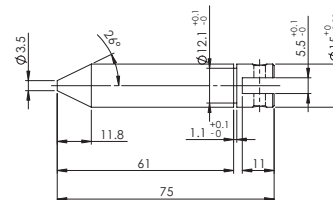
SOLENOID FEATURES AND STANDARD DATA

Type	Pull type DC solenoid		●
Nominal voltage range ¹	V	6 to 48	●
Loading force ²	N	3.6	
Cable	Flying wires		●
Cable length	mm	230	
Service life	At least 500000 single strokes		
Return spring	Yes		
Plunger material	Carbon steel 12L14		
IP rating	IP00		
Insulation class	B		
Weight	g	800	
Operating temperature	°C	-5 to 40	
Manufacturing standard	ISO9001:2008 ISO/TS 16949:2002		
CE label UL label	No No		

PERFORMANCE GRAPH



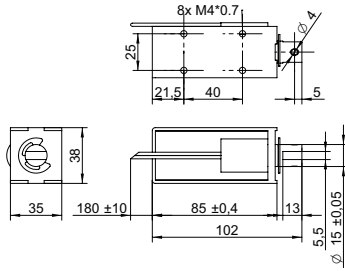
PLUNGER PROFILE



NOTES

- Nominal voltages, 100 % duty cycle.
- At 5 mm compression.

DRAWING (mm)



PHOTO



MODEL NO. DESIGNATION

F1585L - VOLTAGE

Example: F1585L-06V

ACCESSORIES

● C = customizations are offered on demand even for smaller quantities. Typical customizations are indicated with a green dot at column end. Please contact us for any customization request.

SOLENOID DATA

		C			
Duty cycle	%	100	50	25	10
Power	W	13	25	51	127
Max. time in energized state	s	∞	160	80	32

PERFORMANCE DATA F1585L-06V

		C			
Duty cycle	%	100	50	25	10
Individual voltages	V	6	8.5	12	19
Resistance	Ω	2.8			

PERFORMANCE DATA F1585L-12V

		C			
Duty cycle	%	100	50	25	10
Individual voltages	V	12	17	24	38
Resistance	Ω	11			

PERFORMANCE DATA F1585L-24V

		C			
Duty cycle	%	100	50	25	10
Individual voltages	V	24	34	48	76
Resistance	Ω	45			

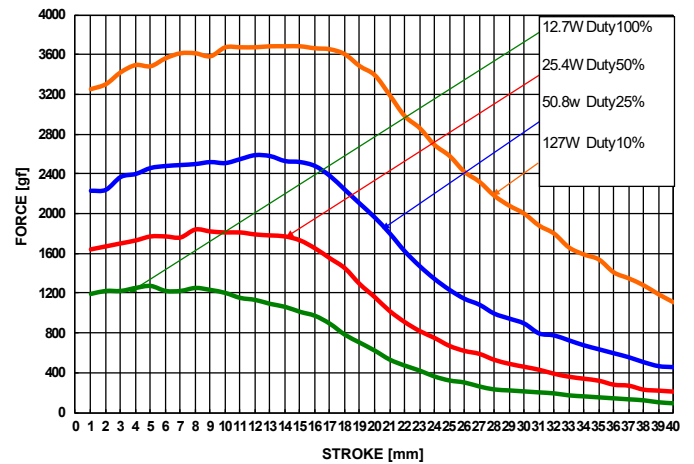
PERFORMANCE DATA F1585L-48V

		C			
Duty cycle	%	100	50	25	10
Individual voltages	V	48	68	96	152
Resistance	Ω	181			

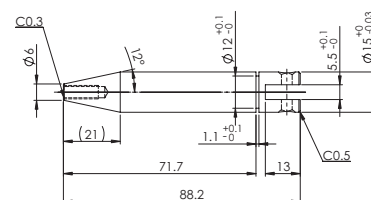
SOLENOID FEATURES AND STANDARD DATA

		C	
Type		Pull type DC solenoid	●
Nominal voltage range ¹	V	6 to 48	●
Loading force ²	N	3.6	
Cable		Flying wires	●
Cable length	mm	230	
Service life		At least 500000 single strokes	
Return spring		Yes	
Plunger material		Carbon steel 12L14	
IP rating		IP00	
Insulation class		B	
Weight	g	530	
Operating temperature	°C	-5 to 40	
Manufacturing standard		ISO9001:2008 ISO/TS 16949:2002	
CE label UL label		No No	

PERFORMANCE GRAPH



PLUNGER PROFILE



NOTES

1. Nominal voltages, 100 % duty cycle.
2. At 5 mm compression.

